

McLoughlin Bros.

Catalogue  
of  
Pictures

Framing --  
Advertising --  
Premiums etc

*Inventory No. 100*

EMBOSSSED GAME

4000



GROUSE AND WOODCOCK  
No. 601 — Size, 10 x 14 ins.

4200



QUAIL AND DUCK  
No. 602 — Size, 10 x 14 ins.

4500



MALLARD DUCK  
No. 603 — Size, 10 x 14 ins.

not in even.



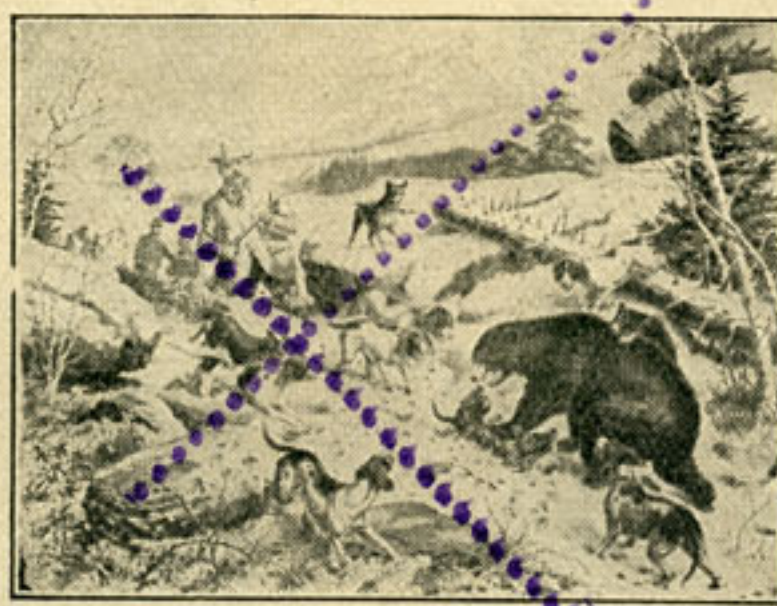
RABBIT  
No. 604 — Size, 10 x 14 ins.

COLORED PRINTS

580

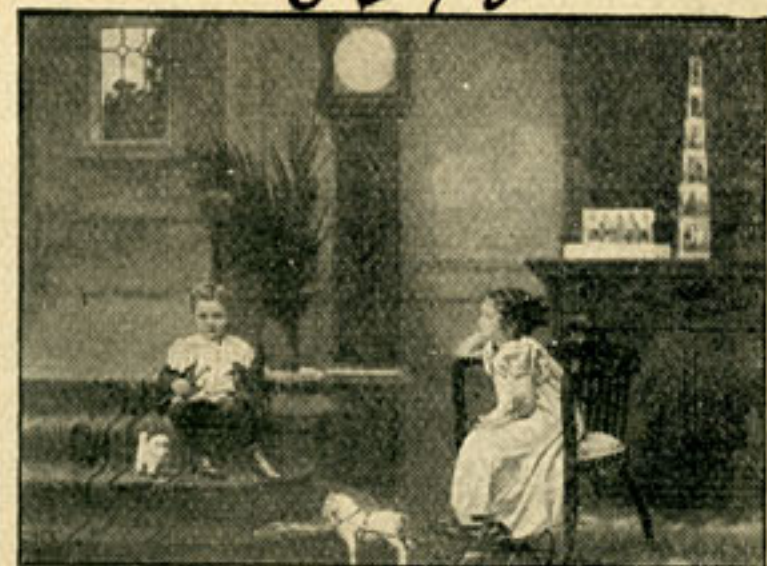


ON THE TRACK  
No. 1401 — Size, 16 x 20 ins.



THE BEAR AT BAY  
No. 1402 — Size, 16 x 20 ins.  
621

3370



PLAYMATES  
No. 1503 — Size, 16 x 20 ins.  
UPRIGHT

1254



SURPRISED BY MAMMA  
No. 1504 — Size, 16 x 20 ins.



AMERICAN BEAUTIES  
No. 1515 — Size, 16 x 20 ins.  
2421

4646



DAN AND I  
No. 1513 — Size, 16 x 20 ins.

3246



HIGHWAY ROBBERS  
No. 1519 — Size, 16 x 20 ins.



THE PRISONER  
No. 1520 — Size, 16 x 20 ins.



THREE LITTLE RASCALS  
No. 1531 — Size, 16 x 20 ins.

COLORED PRINTS

7326



VIOLATING THE SPEED LAW  
No. 1539 — Size, 16 x 20 ins.

5446



SEE SAW  
No. 1540 — Size, 16 x 20 ins.

1510



LOST IN THE WOODS  
No. 1556 — Size, 16 x 20 ins.

2040



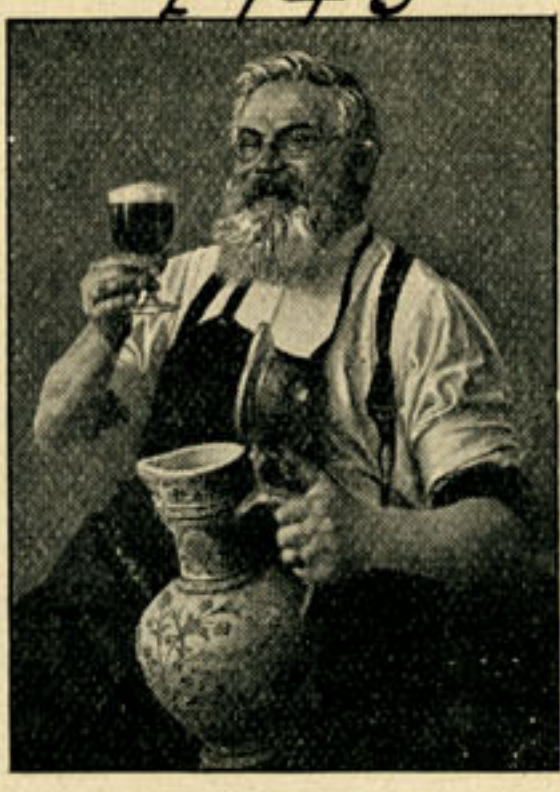
HIS BODYGUARD  
No. 1557 — Size, 16 x 20 ins.



THE FISHERMAN'S BRIDE  
No. 1558 — Size, 16 x 20 ins.



CHARMED  
No. 1559 — Size, 16 x 20 ins.



AFTER TOIL WHAT BETTER  
CHEER THAN A DRINK OF  
GOOD COOL LAGER BEER  
No. 1704 — Size, 16 x 20 ins.



FOR FOOD AND DRINK, THE LORD  
BE THANKED  
No. 1803 — Size, 16 x 20 ins.

3600



COME FIDO  
No. 1806 — Size, 16 x 20 ins.

5000

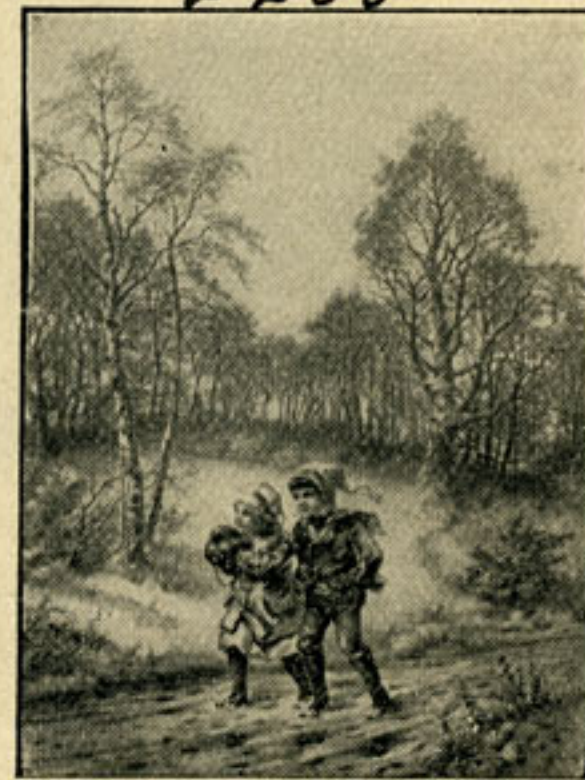


CROSSING THE BROOK  
No. 1807 — Size, 16 x 20 ins.

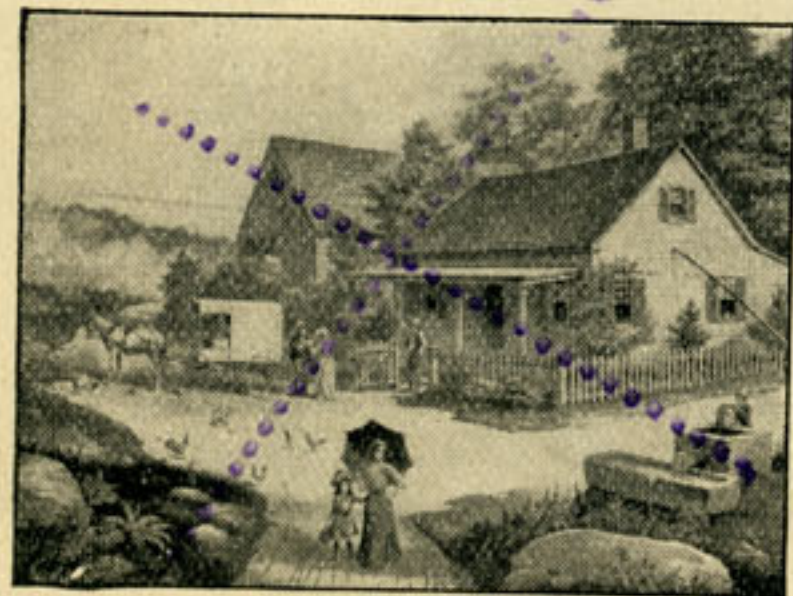
1170



SUMMER JOYS  
No. 1808 — Size, 16 x 20 ins.



A CHRISTMAS VISIT TO GRANDMA  
No. 1809 — Size, 16 x 20 ins.



THE OLD HOMESTEAD  
No. 1810 — Size, 16 x 20 ins.



THE BACKWOODSMAN'S CHRISTMAS  
No. 1811 — Size, 16 x 20 ins.



A TEMPTING DISPLAY  
No. 1812 — Size, 16 x 20 ins.

COLORED PRINTS  
4546

6536

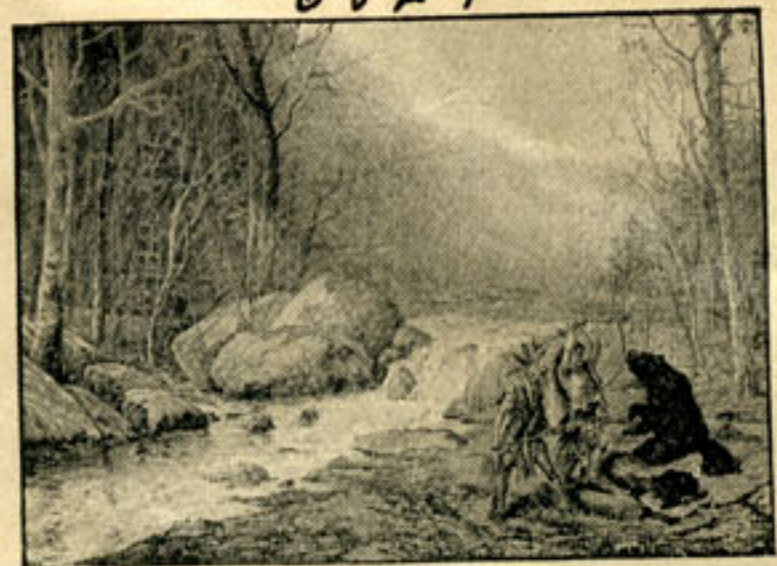


DELICIOUS FRUIT  
No. 1813 — Size, 16 x 20 ins.  
2166



AN INDIAN MOOSE HUNT  
No. 1818 — Size, 16 x 20 ins.  
939

6821



AN INDIAN BEAR HUNT  
No. 1819 — Size, 16 x 20 ins.  
1766



ON THE BRONX RIVER  
No. 2003 — Size, 16 x 20 ins.  
4166



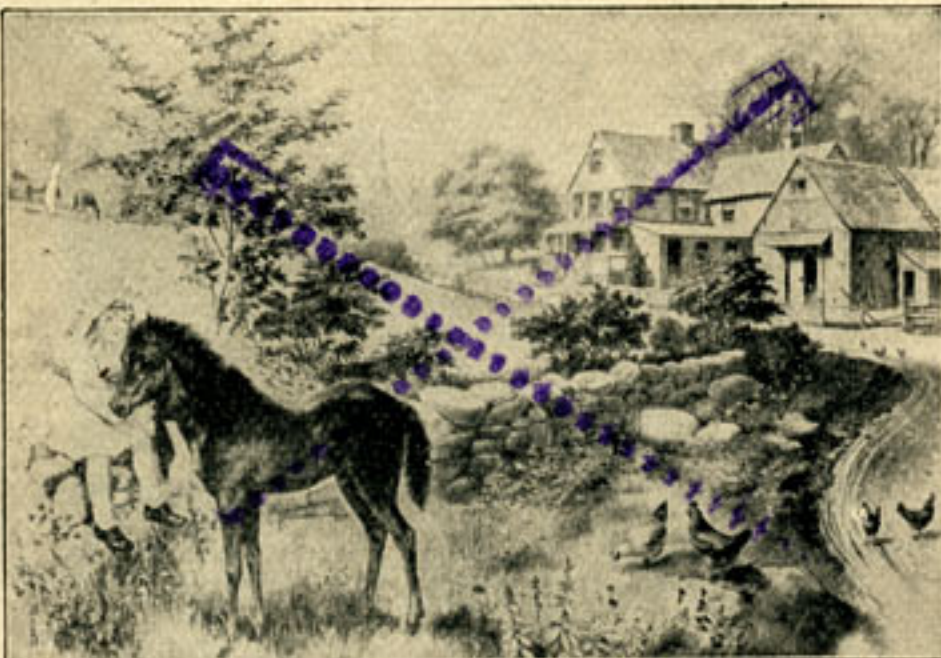
DOWN EAST  
No. 2004 — Size, 16 x 20 ins.



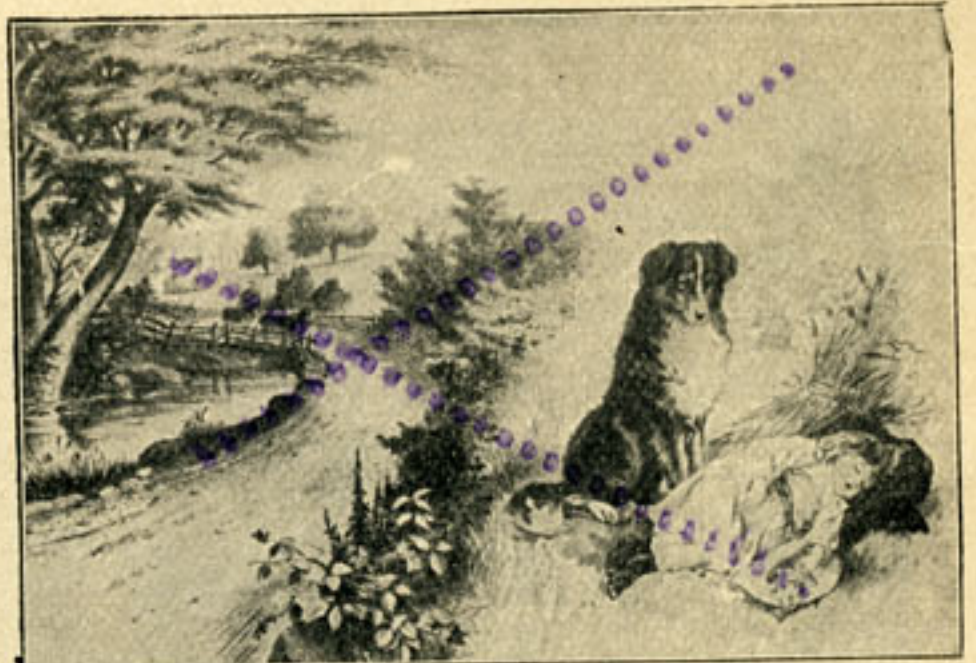
WAKEFIELD  
BIRTHPLACE OF WASHINGTON  
No. 2005 — Size, 16 x 20 ins.



BIRTHPLACE OF HOWARD PAYNE  
No. 2006 — Size, 16 x 20 ins.  
4946



EARLY CARES  
No. 2013 — Size, 16 x 20 ins.



ON GUARD  
No. 2014 — Size, 16 x 20 ins.



BIRTHPLACE OF ULYSSES S. GRANT  
No. 2017 — Size, 16 x 20 ins.  
4680



BIRTHPLACE OF ABRAHAM LINCOLN  
No. 2018 — Size, 16 x 20 ins.  
4806



HOME OF H. W. LONGFELLOW  
No. 2019 — Size, 16 x 20 ins.  
1201  
4754



BIRTHPLACE OF SAMUEL WOODWORTH  
Author of "The Old Oaken Bucket."  
No. 2020 — Size, 16 x 20 ins.



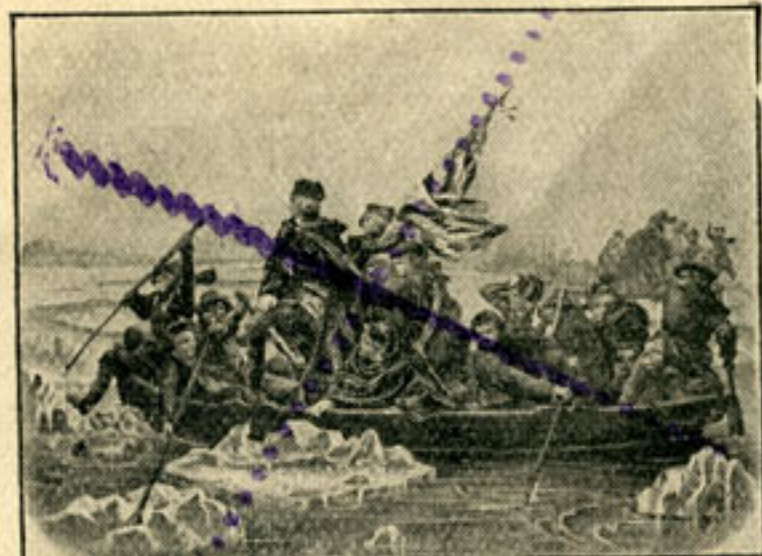
THE CHOICE OF THE SEASON  
No. 2021 — Size, 16 x 20 ins.



AUTUMN FRUIT  
No. 2022 — Size, 16 x 20 ins.

COLORED PRINTS

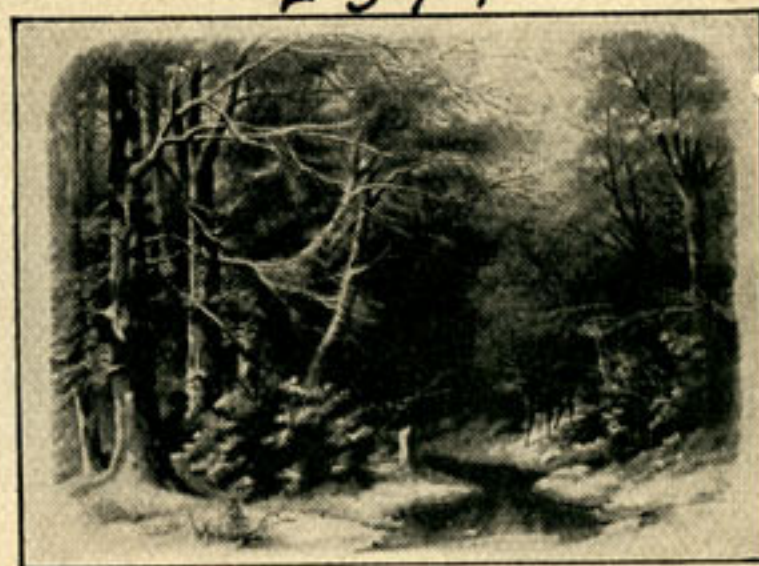
3041



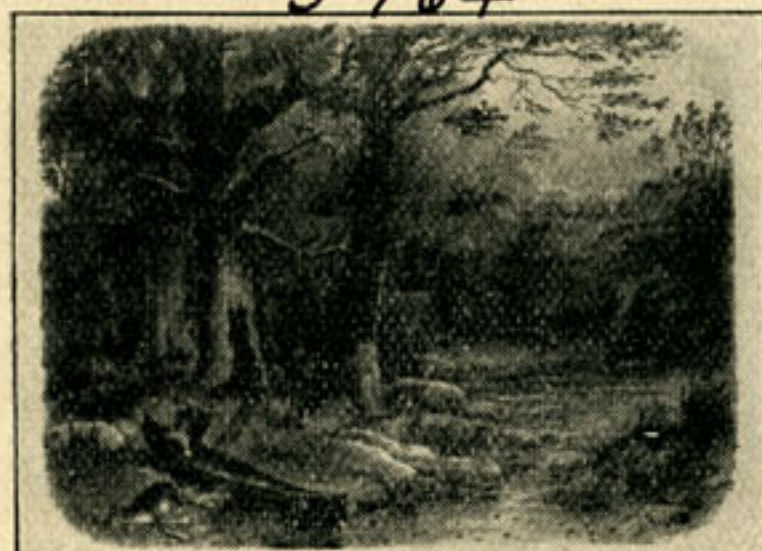
WASHINGTON CROSSING  
THE DELAWARE  
No. 2027 — Size, 16 x 20 ins.  
5964



PUTNAM LEAVING THE PLOUGH  
No. 2028 — Size, 16 x 20 ins.  
2574



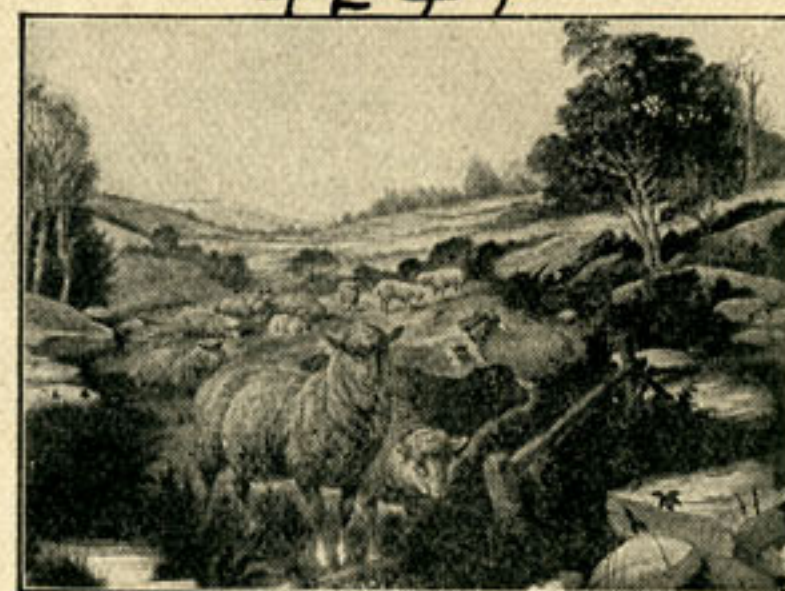
A HUNTER'S DREAM  
No. 2029 — Size, 16 x 20 ins.  
4244



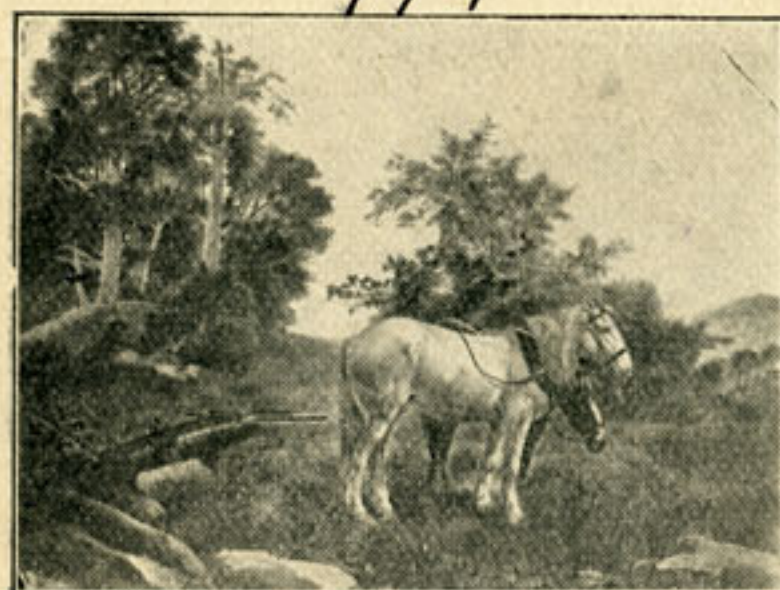
FISHING AND HUNTING IN THE  
ADIRONDACKS  
No. 2030 — Size, 16 x 20 ins.  
979



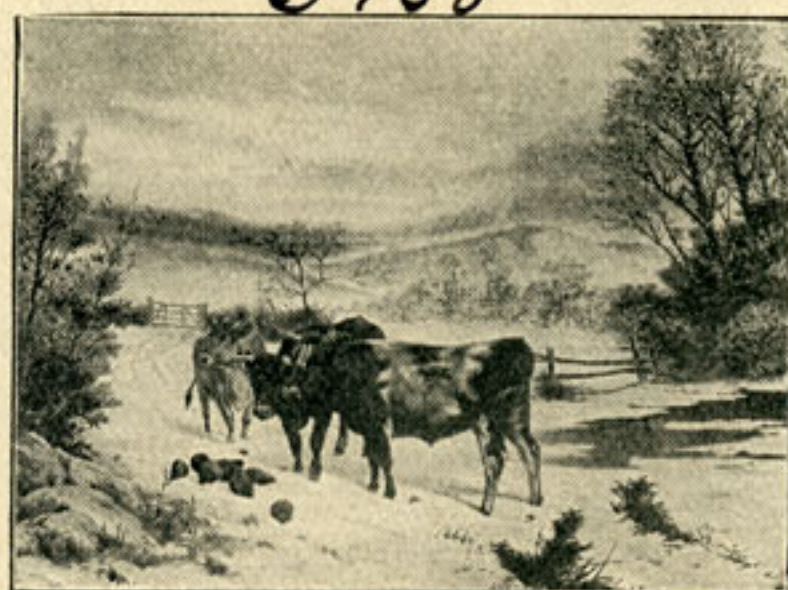
SPRINGTIME  
No. 3501 — Size, 16 x 20 ins.  
3958



MIDSUMMER  
No. 3502 — Size, 16 x 20 ins.



BEGINNING THE FALL  
No. 3503 — Size, 16 x 20 ins.



CATTLE IN WINTER  
No. 3504 — Size, 16 x 20 ins.  
6400



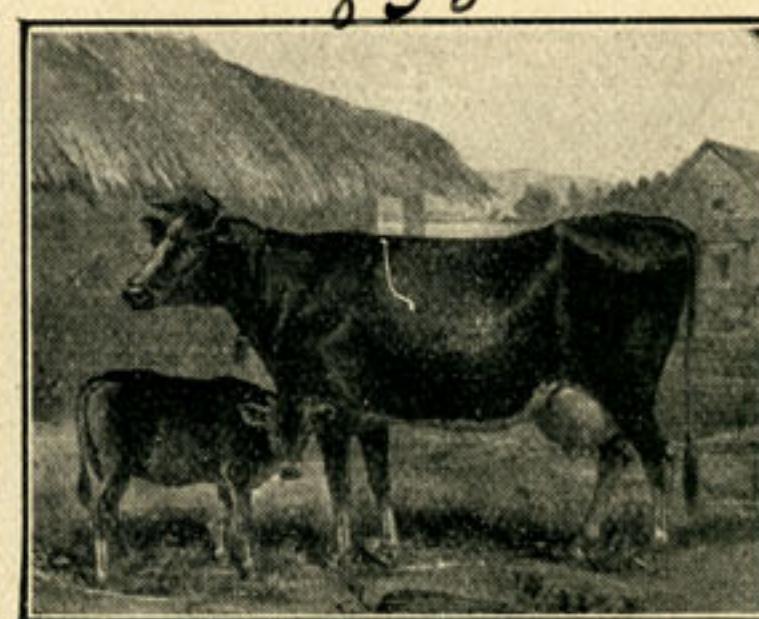
THE OLD WINDMILL  
No. 3505 — Size, 16 x 20 ins.  
858



CHRISTMAS IN THE COUNTRY  
No. 3506 — Size, 16 x 20 ins.



THE PRIDE OF THE FARM  
No. 3507 — Size, 16 x 20 ins.



DAISY AND HER CALF  
No. 3508 — Size 16 x 20 ins.



PRISCILLA'S MEDITATION  
No. 3510 — Size, 16 x 20 ins.



THE PRIDE OF THE FAMILY  
No. 3509 — Size, 16 x 20 ins.



MAMMA'S BIRTHDAY  
No. 3511 — Size, 16 x 20 ins.

COLORED PRINTS



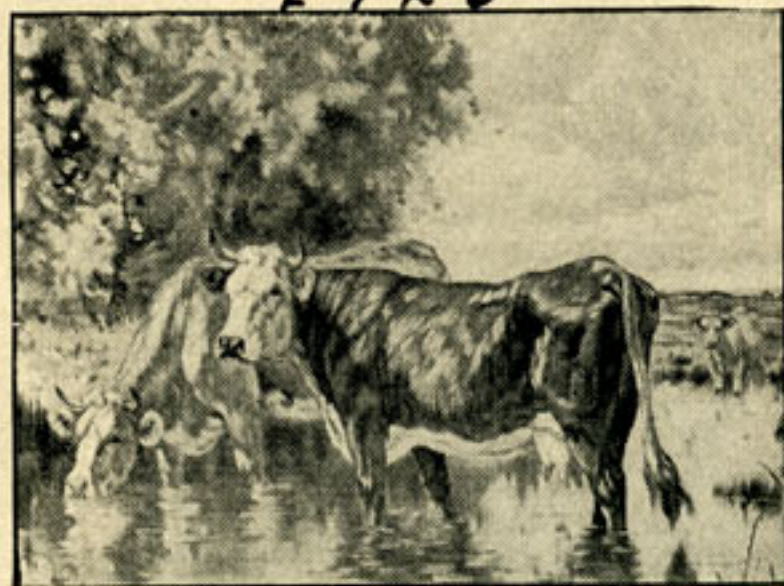
AN UP-TO-DATE STORE  
No. 3513 — Size, 16 x 20 ins.



AN INDIAN CHIEF  
No. 3512 — Size, 16 x 20 ins.



IN THE COOL OF THE EVENING  
No. 3514 — Size, 16 x 20 ins.  
UPRIGHT 500



A FAVORITE NOOK  
No. 3515 — Size, 16 x 20 ins.  
UPRIGHT



A CLEVER ARTIST  
No. 3517 — Size, 16 x 20 ins.



FIRE FIGHTERS  
No. 3519 — Size, 16 x 20 ins.

A TEMPTING BAIT  
No. 3516 — Size 16 x 20 ins.



O, YOU SQUEALER!  
No. 3518 — Size, 16 x 20 ins.



TWO GREEK MAIDENS  
No. 3520 — Size, 16 x 20 ins.  
UPRIGHT 7907



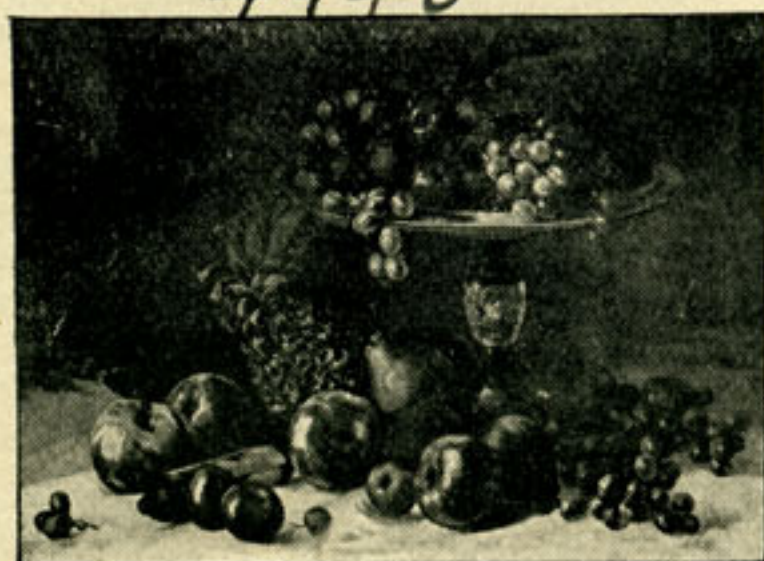
HER LITTLE SISTER  
No. 3521 — Size, 16 x 20 ins.



AN IMPORTANT QUESTION  
No. 3522 — Size, 16 x 20 ins.  
UPRIGHT



AFTERNOON REFRESHMENTS  
No. 3523 — Size, 16 x 20 ins.  
UPRIGHT



FOR THE WEDDING TABLE  
No. 3524 — Size, 16 x 20 ins.  
UPRIGHT



HIS THREE FAITHFUL FRIENDS  
No. 6003 — Size, 16 x 20 ins.



THE OLD HOMESTEAD  
No. 3525 — Size, 16 x 20 ins.  
UPRIGHT

COLORED PRINTS

1395

7459



THE BACKWOODSMAN'S CHRISTMAS  
No. 3526 — Size, 16 x 20 ins.  
UPRIGHT



YOUNG NAVIGATORS  
No. 3527 — Size, 16 x 20 ins.

1095



SQUIRREL FRIENDS IN THE PARK  
No. 3528 — Size, 16 x 20 ins.

DUPLEX PHOTOS

1702



THOUGHTS FAR AWAY  
No. 1501 — Size 16 x 20 ins.

1968



HOME AGAIN  
No. 1506 — Size, 16 x 20 ins.

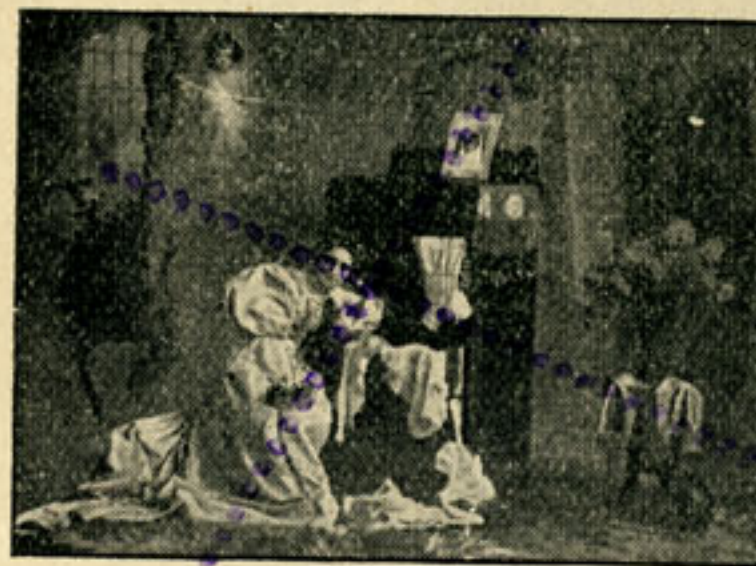


ABSENCE MAKES THE HEART  
GROW FONDER  
No. 1507 — Size, 16 x 20 ins.

Not in inven.



MAMMA'S SWEETHEART  
No. 1512 — Size, 16 x 20 ins.  
OBLONG



A MOTHER'S DREAM  
No. 1511 — Size, 16 x 20 ins.

3525



WHERE ART THOU, ROMEO?  
No. 1521 — Size, 16 x 20 ins.



EXPECTATION  
No. 1523 — Size, 16 x 20 ins.



A HEART-BREAKING PARTING  
No. 1525 — Size, 16 x 20 ins.

857



SWEET BLOSSOMS  
No. 1524 — Size, 16 x 20 ins.

DUPLEX PHOTOS

5787



737  
WIDE AWAKE  
No. 1527 — Size, 16 x 20 ins.



CONFIDE IN ME  
No. 1526 — Size, 16 x 20 ins.



FAST ASLEEP  
No. 1528 — Size, 16 x 20 ins.



A TRUSTY GUARDIAN  
No. 1529 — Size, 16 x 20 ins.



NERO'S MORNING TOILET  
No. 1530 — Size, 16 x 20 ins.



A MOTHER'S BLISS  
No. 1532 — Size, 16 x 20 ins.



JOHN ALDEN AND PRISCILLA'S COURTSHIP  
No. 1535 — Size, 16 x 20 ins.



MORNING CARES OF LITTLE COUNTRY FOLKS  
No. 1537 — Size, 16 x 20 ins.



JONH ALDEN AND PRISCILLA WEDDED  
No. 1536 — Size, 16 x 20 ins.



GRANDPA'S DELIGHT  
No. 1541 — Size, 16 x 20 ins.



LAST HONORS TO BUNNY  
No. 1538 — Size, 16 x 20 ins.



A FUTURE CUP DEFENDER  
No. 1543 — Size, 16 x 20 ins.



3019



THERE HE COMES  
No. 1544 — Size, 16 x 20 ins.

DUPLEX PHOTOS

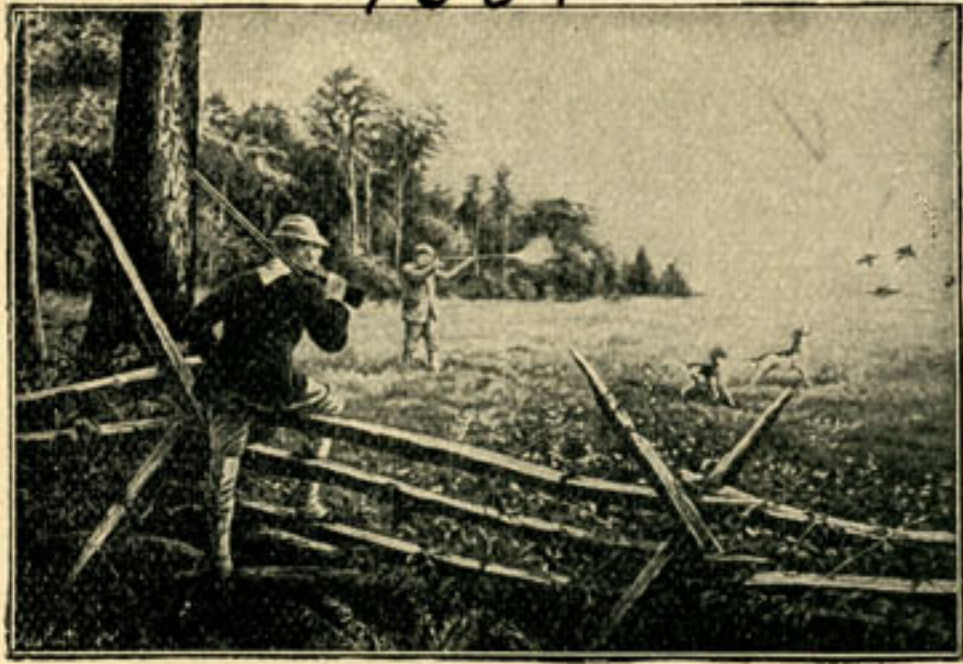


AWAITING SENTENCE  
No. 1546 — Size, 16 x 20 ins.

281



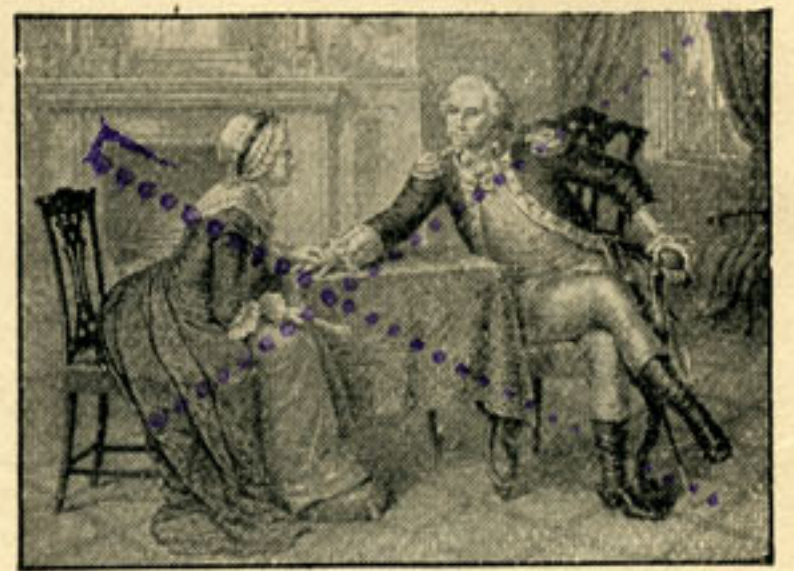
SHALL I SAY YES?  
No. 1545 — Size, 16 x 20 ins.



PARTRIDGE SHOOTING  
No. 1548 — Size, 16 x 20 ins.



TROUT FISHING  
No. 1549 — Size, 16 x 20 ins.



WASHINGTON AND HIS MOTHER  
No. 1552 — Size, 16 x 20 ins.



HAPPY-GO-LUCKY  
No. 1554 — Size, 16 x 20 ins.



WASHINGTON'S COURTSHIP  
No. 1553 — Size, 16 x 20 ins.



THE LUCKY HUNTER  
No. 1555 — Size, 16 x 20 ins.



CHARMS OF ART  
No. 1560 — Size 16 x 20 ins.

1596

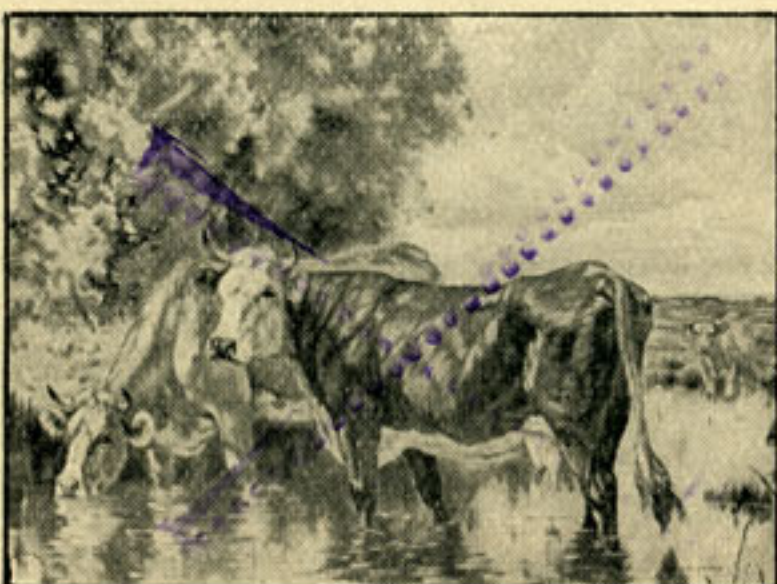


CHARMS OF NATURE  
No. 1561 — Size, 16 x 20 ins.

519



GUARDING THE FLOCK  
No. 1562 — Size, 16 x 20 ins.



A COOL RETREAT  
No. 1563 — Size, 16 x 20 ins.

7995



ELOPEMENT AND PURSUIT  
No. 1564 — Size, 16 x 20 ins.

1295



LOVERS TRIUMPH  
No. 1565 — Size, 16 x 20 ins.

DUPLEX PHOTOS



HIS FIRST MODEL  
No. 1566 — Size, 16 x 20 ins.

2349



HIS FIRST MODEL  
No. 1568 — Size, 16 x 20 ins.

4110



LOOK PLEASSANT, NERO  
No. 1567 — Size, 16 x 20 ins.



COURTSHIP  
No. 1570 — Size, 16 x 20 ins.

427



LOOK PLEASANT, NERO  
No. 1569 — Size, 16 x 20 ins.

1219



MARRIAGE  
No. 1571 — Size, 16 x 20 ins.



THE INTERRUPTED PROPOSAL  
No. 1572 — Size, 16 x 20 ins.



THE SUNSHINE OF LIFE  
No. 1574 — Size, 16 x 20 ins.

300

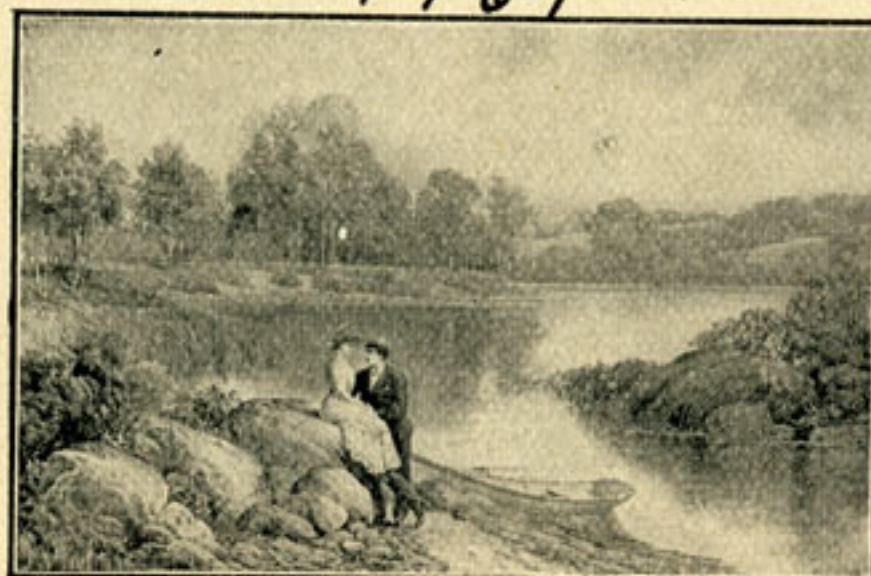


THE FARMER'S DAUGHTER  
No. 1576 — Size, 16 x 20 ins.



PLEASE DANCE WITH ME  
No. 1573 — Size, 16 x 20 ins.

1769



A HAPPY MOMENT  
No. 1575 — Size, 16 x 20 ins.



THE VILLAGE BELLE  
No. 1577 — Size, 16 x 20 ins.

2659



A SAIL BY MOONLIGHT  
No. 1578 — Size, 16 x 20 ins.



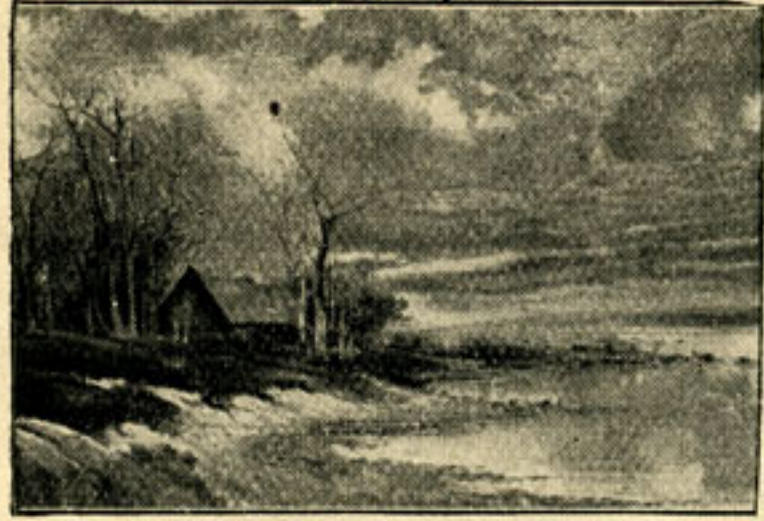
THE HUNTER'S CAMP FIRE  
No. 1579 — Size, 16 x 20 ins.



SUNRISE  
No. 1580 — Size, 16 x 20 ins.

DUPLEX PHOTOS

1276



SUNSET  
No. 1581 — Size, 16 x 20 ins.

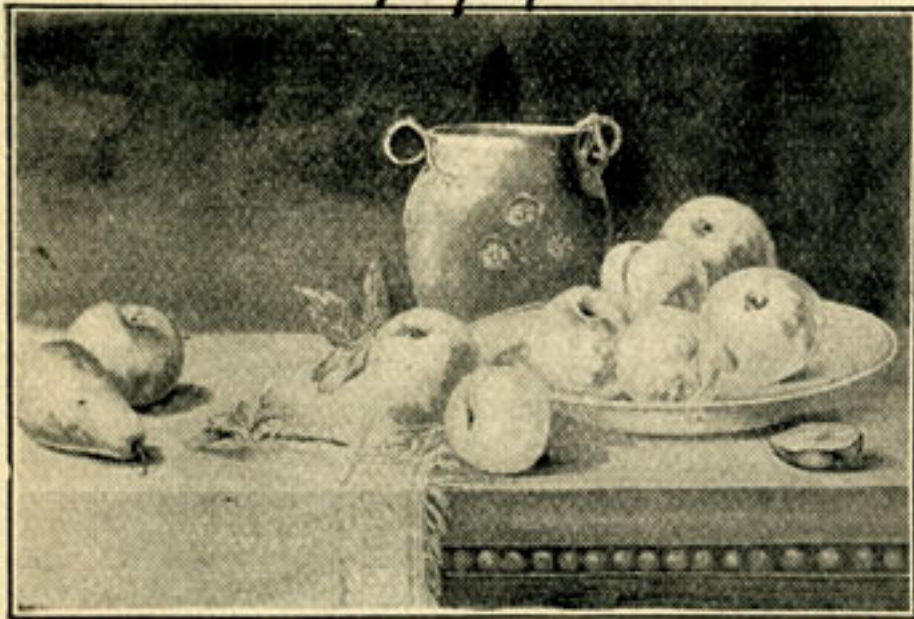


AFTERNOON  
No. 1583 — Size, 16 x 20 ins.



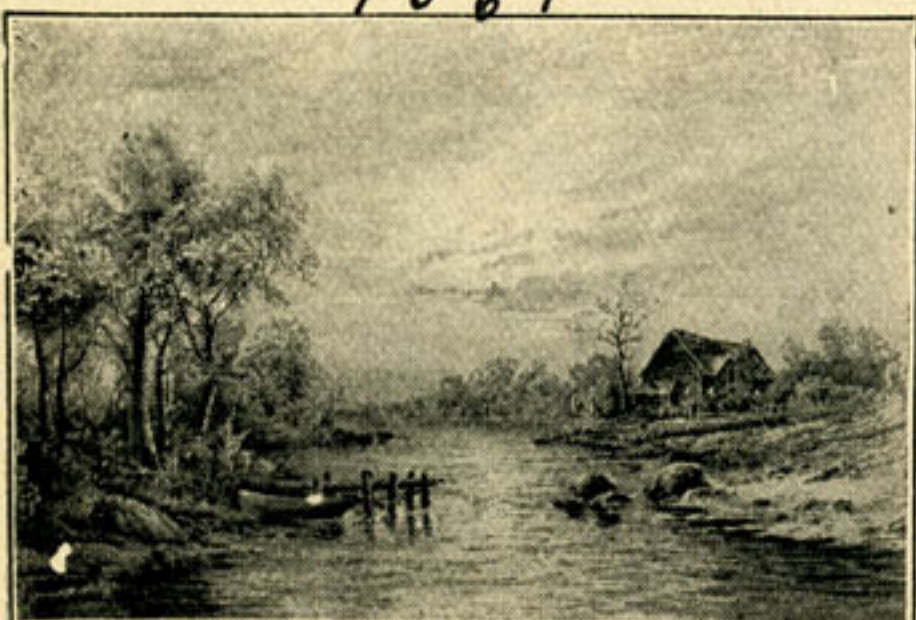
A MOURNFUL DUTY  
No. 1589 — Size, 16 x 20 ins.

277



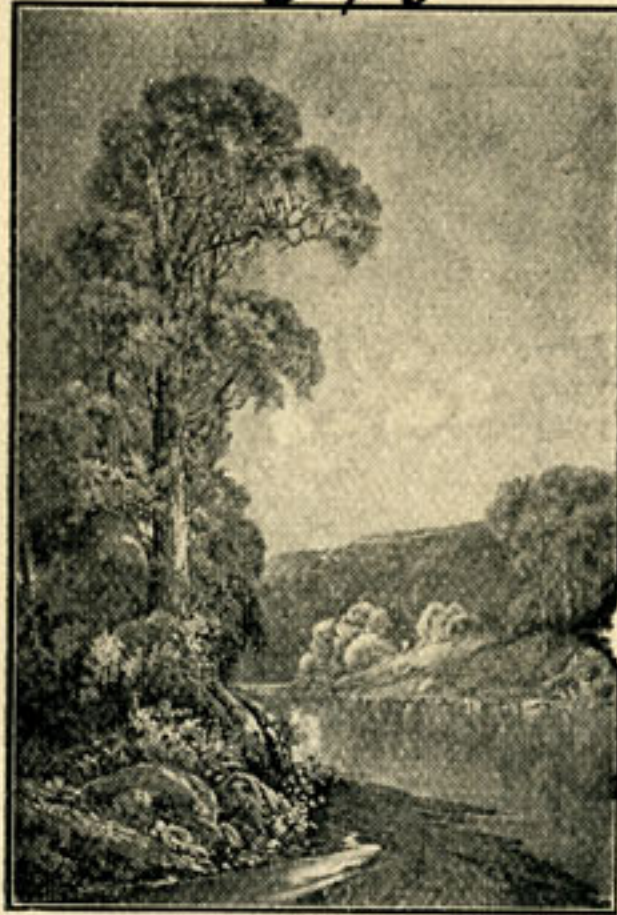
FRESH FROM THE GARDEN  
No. 1591 — Size, 16 x 20 ins.

7661



A BRIGHT MIDNIGHT  
No. 1595 — Size, 16 x 20 ins.

596



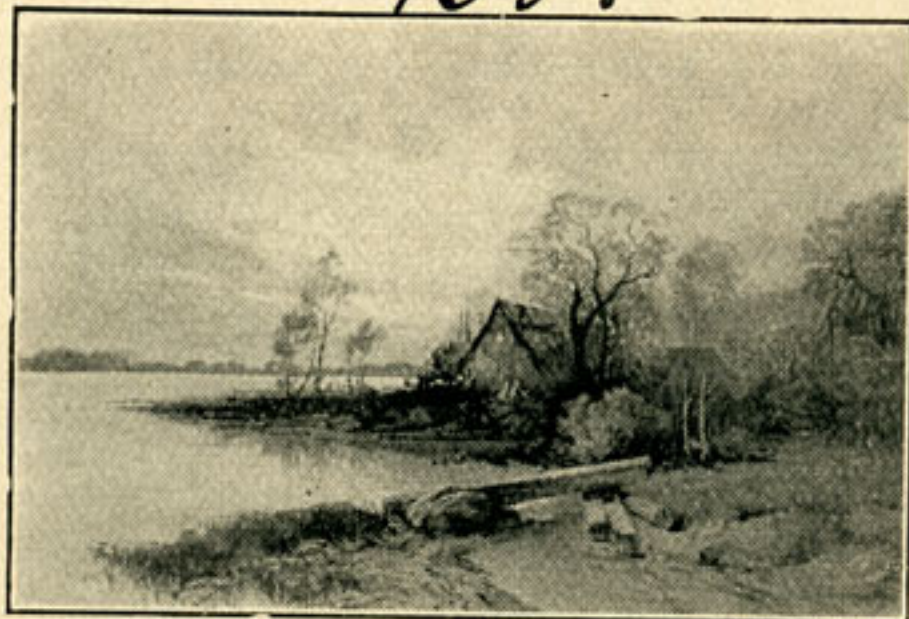
MOONLIGHT IN THE MOHAWK VALLEY  
No. 1584 — Size, 16 x 20 ins.

923



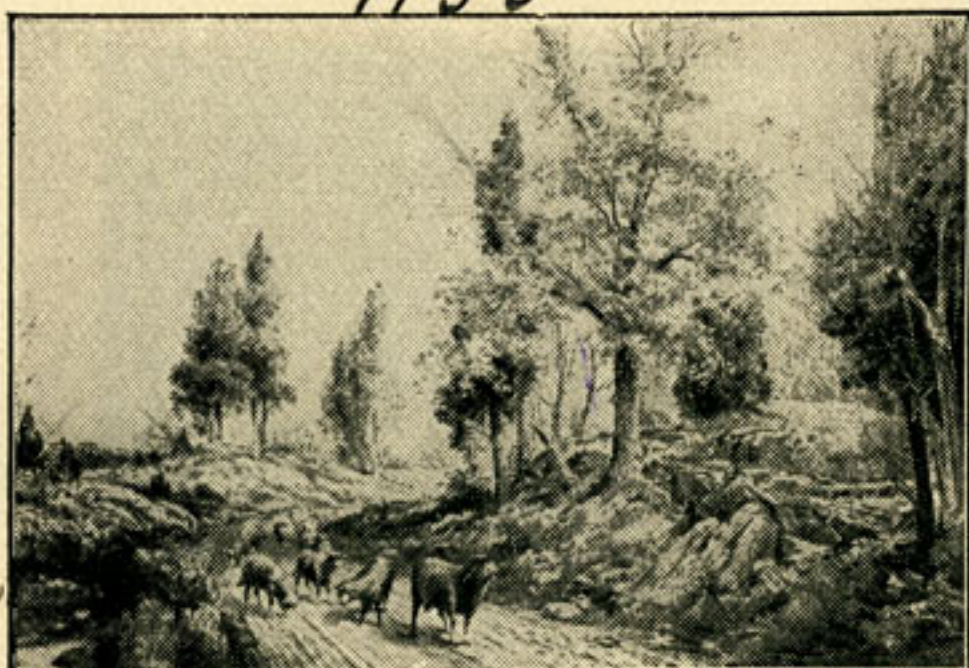
SUNSET ON PECONIC BAY  
No. 1585 — Size, 16 x 20 ins.

130 F



AT BREAK OF DAY  
No. 1592 — Size, 16 x 20 ins.

1135



COME ON HOME  
No. 1596 — Size, 16 x 20 ins.

1200



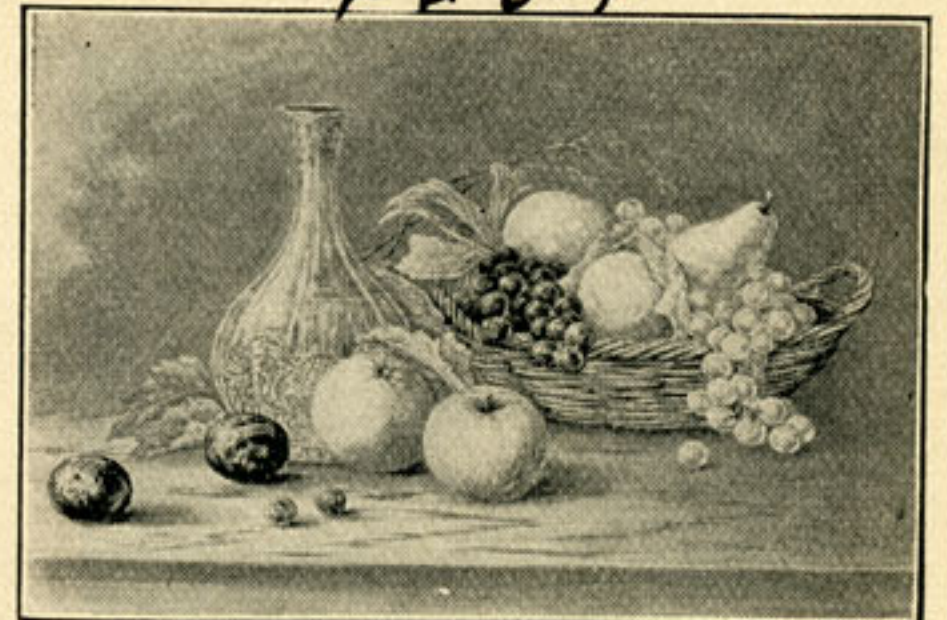
MORNING  
No. 1582 — Size, 16 x 20 ins.

1766

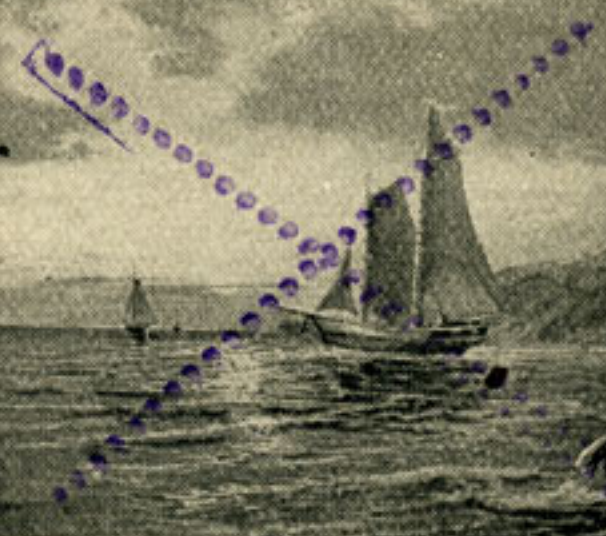


HIS SYMPATHETIC FRIENDS  
No. 1588 — Size, 16 x 20 ins.

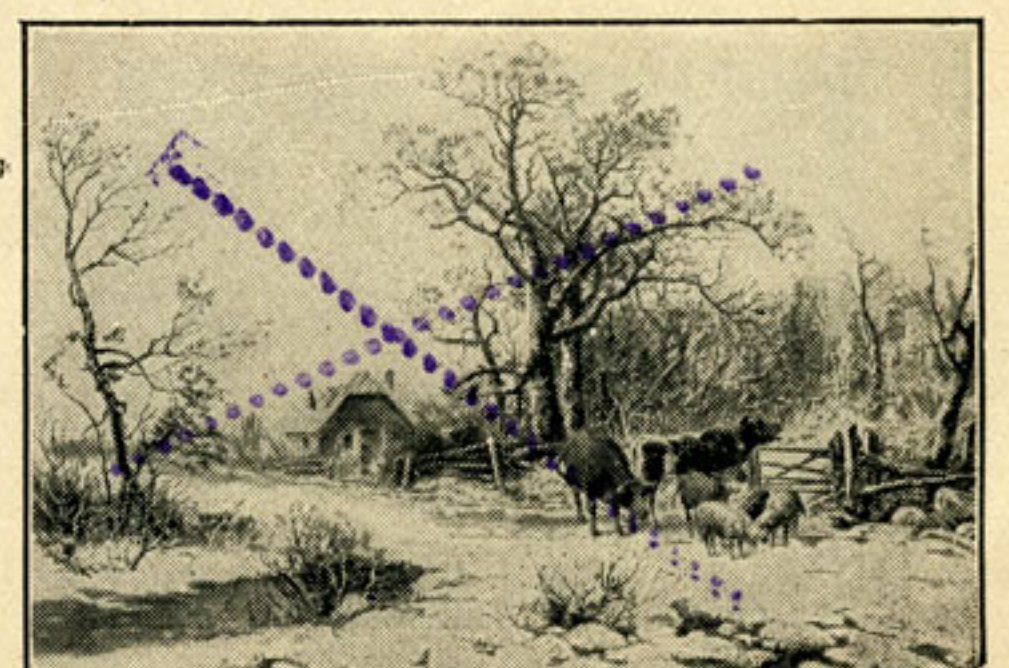
2234



LUSCIOUS FRUITS  
No. 1590 — Size, 16 x 20 ins.



BEFORE SUNDOWN  
No. 1594 — Size, 16 x 20 ins.



LET US IN  
No. 1597 — Size, 16 x 20 ins.

DUPLEX PHOTOS

4539



COMING FROM PASTURE  
No. 1701 — Size, 16 x 20 ins.

1221

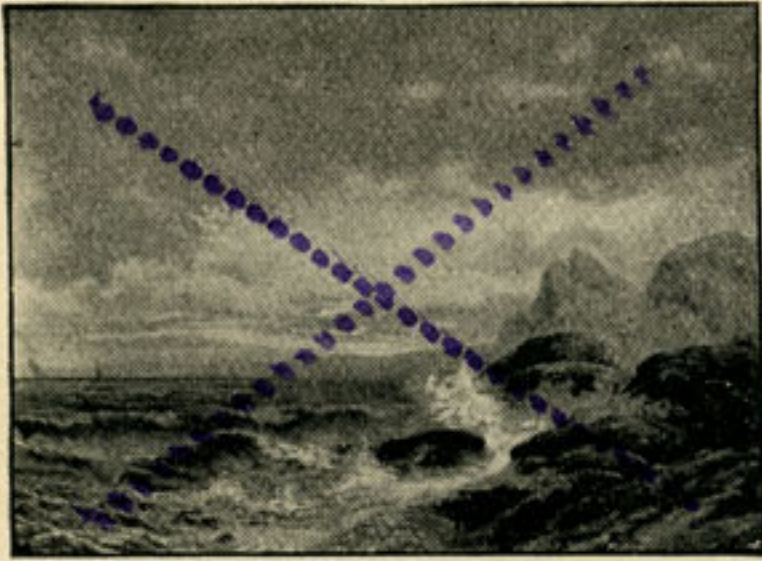


GOING TO PASTURE  
No. 1702 — Size, 16 x 20 ins.

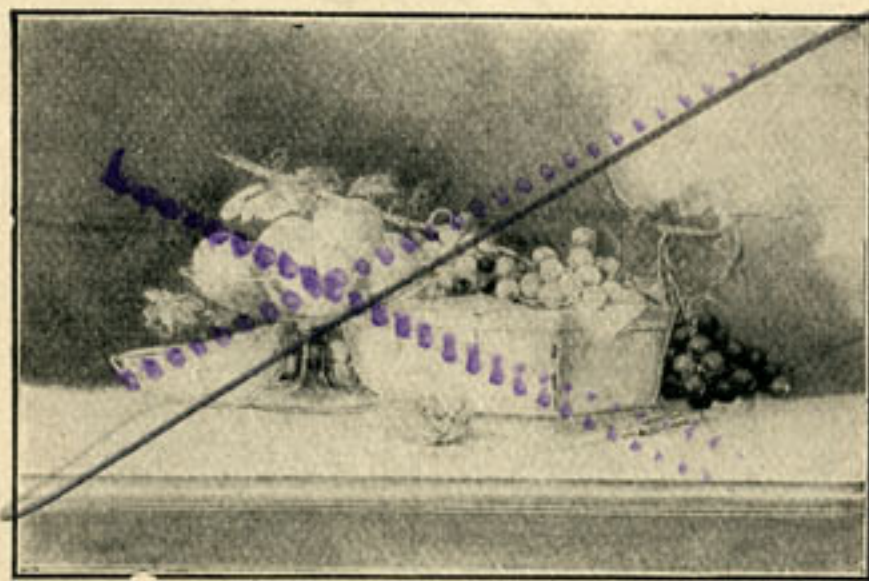
2071



MOONLIGHT AT MONTAUK POINT  
No. 1816 — Size, 16 x 20 ins.

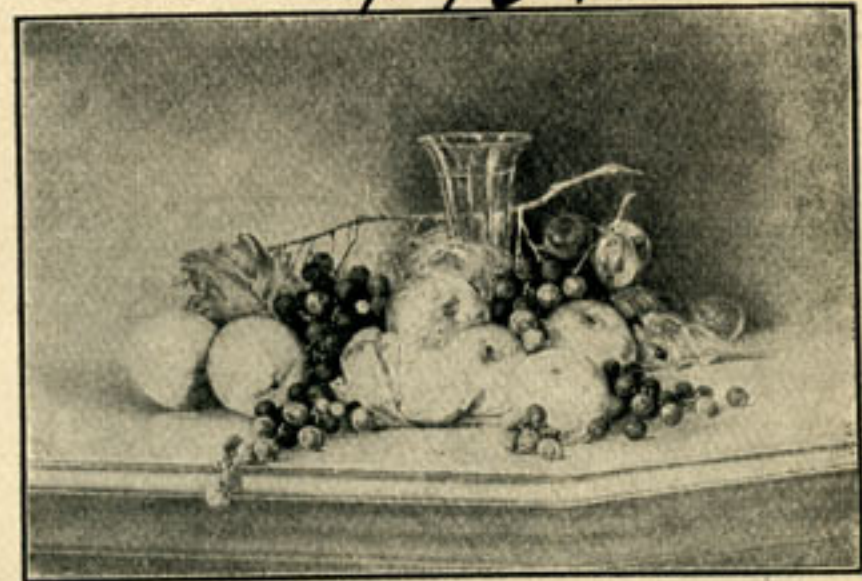


SUNSET ON THE COAST OF MAINE  
No. 1817 — Size, 16 x 20 ins.



BREAKFAST DELIGHTS  
No. 1820 — Size 16 x 20 ins.

4934



GEMS FROM FLORIDA  
No. 1821 — Size, 16 x 20 ins.

*not in series*



AN ARTISTIC MAIDEN  
No. 1901 — Size, 16 x 20 ins.

*not in series*



A ROMANTIC BEAUTY  
No. 1902 — Size, 16 x 20 ins.



WHO IS IT?  
No. 1903 — Size, 16 x 20 ins.

1312



TOUCH HER IF YOU DARE  
No. 1904 — Size, 16 x 20 ins.



THE SWEETEST STORY EVER TOLD  
No. 1905 — Size, 16 x 20 ins.



ROSES HAVE THORNS  
No. 1906 — Size, 16 x 20 ins.

DUPLEX PHOTOS



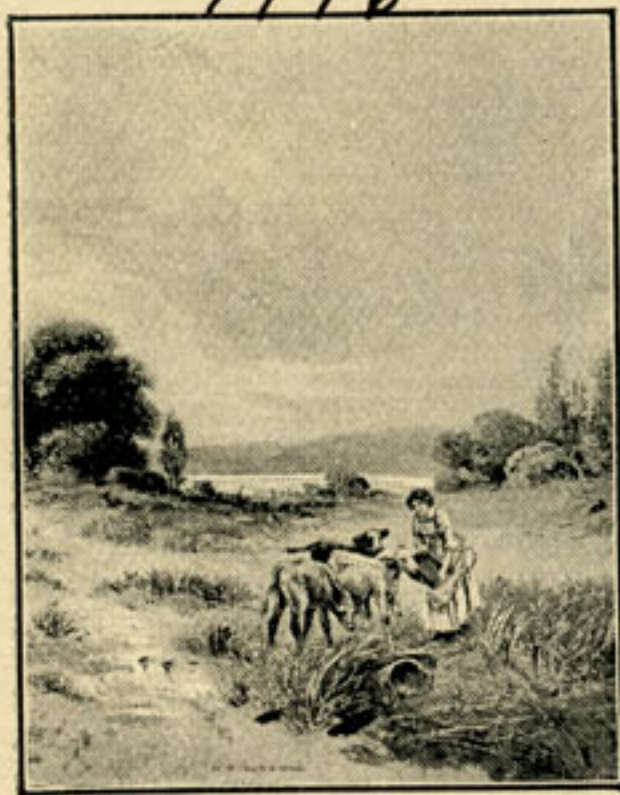
THOUGHTFUL FRIENDS  
No. 1907 — Size, 16 x 20 ins.



WINTER IN NEW HAMPSHIRE  
No. 1909 — Size, 16 x 20 ins.



A CHEERFUL GIVER  
No. 1933 — Size, 16 x 20 ins.



CARING FOR THE MOTHERLESS  
No. 1911 — Size, 16 x 20 ins.



THE FIRST SETTLER'S HOME  
No. 1910 — Size, 16 x 20 ins.



COOLING OFF AT THE BROOK  
No. 1912 — Size, 16 x 20 ins.



RIVAL PETS  
No. 1913 — Size, 16 x 20 ins.



A NEW PET  
No. 1915 — Size, 16 x 20 ins.



AFTER DINNER NAP  
No. 1914 — Size, 16 x 20 ins.



A DANDY FEAST  
No. 1917 — Size, 16 x 20 ins.



PRETTY AND WITTY  
No. 1916 — Size, 16 x 20 ins.



SWEET AS THEY LOOK  
No. 1918 — Size, 16 x 20 ins.

DUPLEX PHOTOS



VALLEY STREAM  
No. 1919 — Size, 16 x 20 ins.



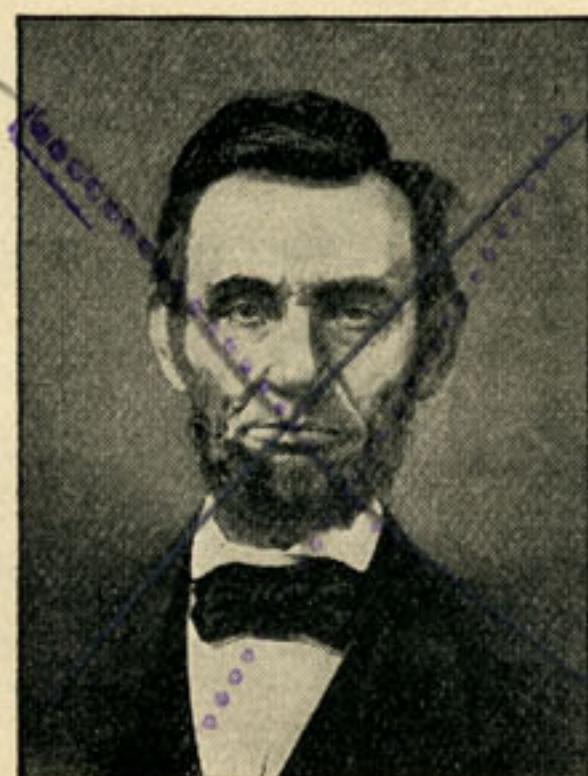
GEORGE WASHINGTON  
No. 3001 — Size, 16 x 20 ins.



THE HEAD OF THE BAY  
No. 1920 — Size, 16 x 20 ins.



HER FIRST RECITAL  
No. 6001 — Size, 16 x 20 ins.

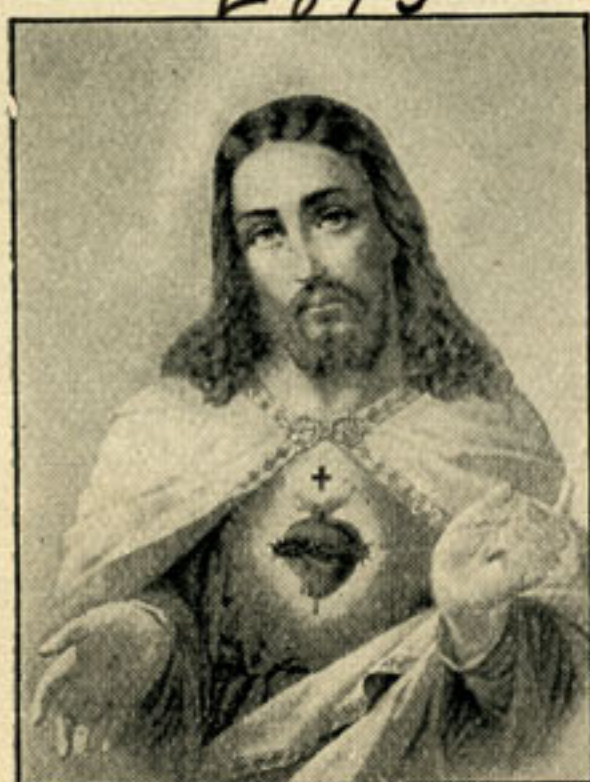


ABRAHAM LINCOLN  
No. 3002 — Size, 16 x 20 ins.



AN INTERESTING STORY  
No. 6002 — Size, 16 x 20 ins.

DUPLEX RELIGIOUS



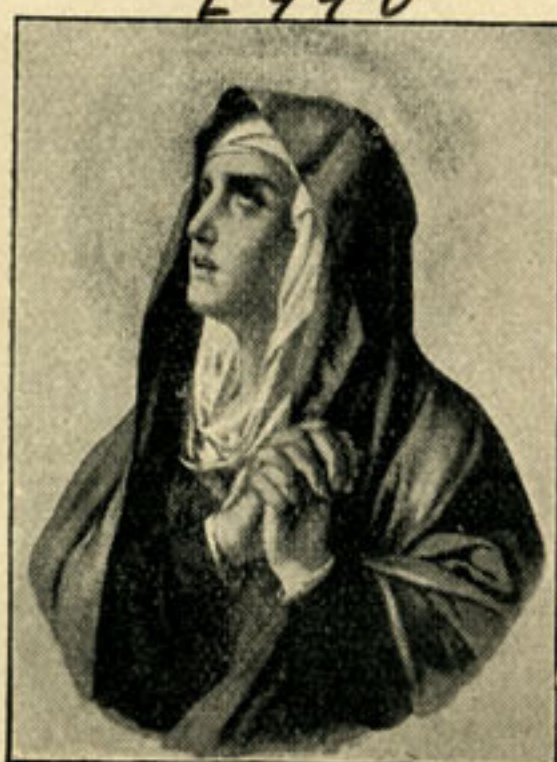
SACRED HEART OF JESUS  
No. 1601 — Size, 16 x 20 ins.



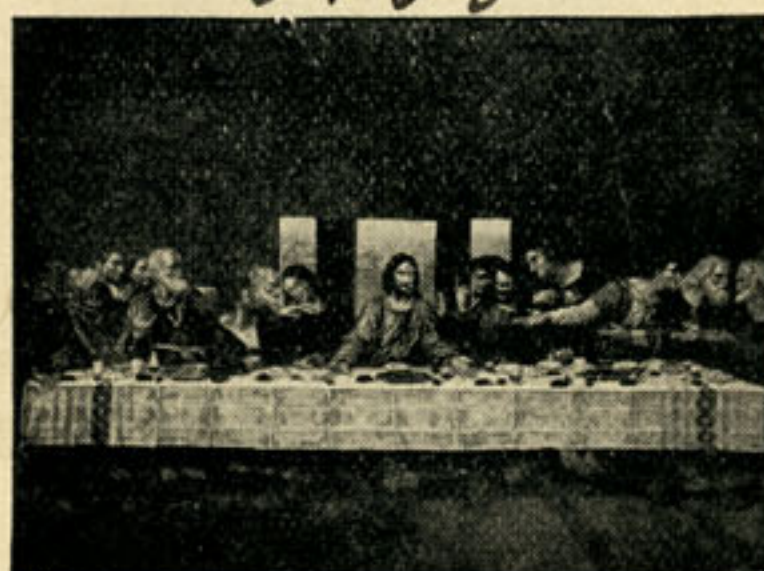
SACRED HEART OF MARY  
No. 1602 — Size, 16 x 20 ins.



ECCE HOMO  
No. 1603 — Size, 16 x 20 ins.



MATER DOLOROSA  
No. 1604 — Size, 16 x 20 ins.



THE LAST SUPPER  
No. 1605 — Size, 16 x 20 ins.

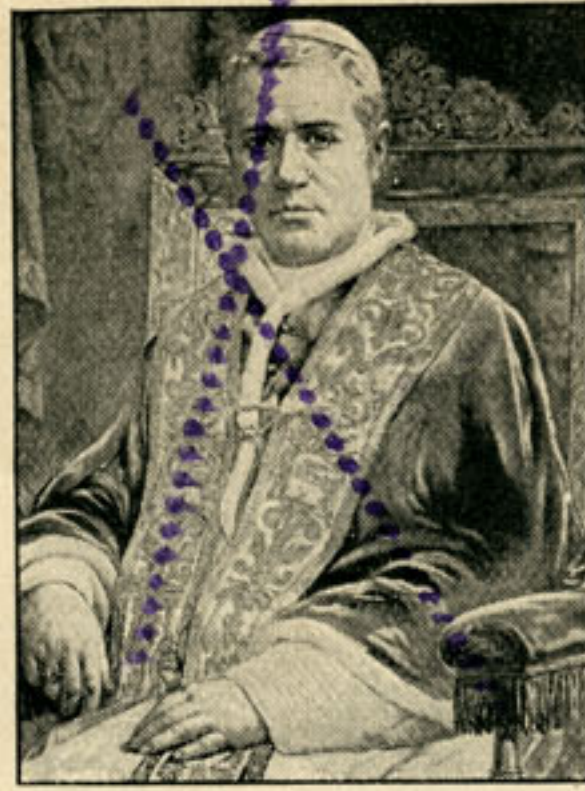


THE HOLY FAMILY  
No. 1606 — Size, 16 x 20 ins.

Duplex Religious



ST. ANTHONY OF PADUA  
No. 1607 — Size, 16 x 20 ins.



POPE PIUS X.  
No. 1608 — Size, 16 x 20 ins.



GUARDIAN ANGEL  
No. 1609 — Size, 16 x 20 ins.

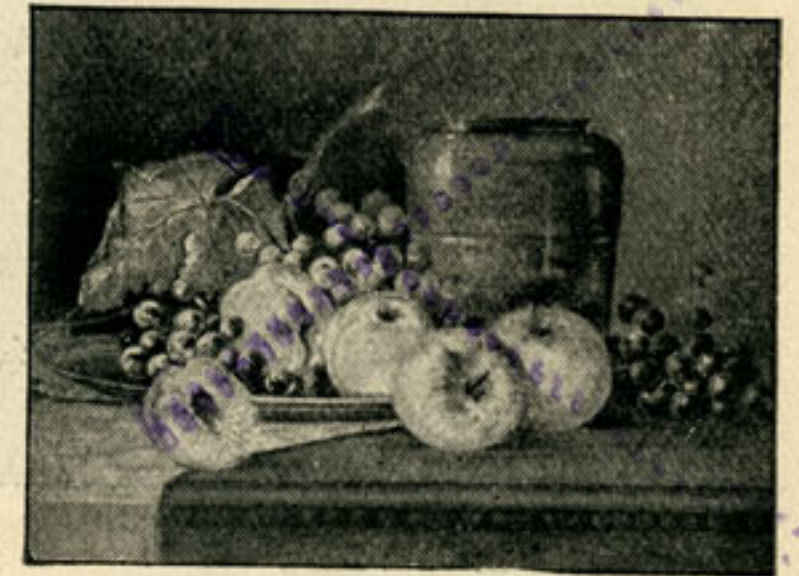
COLORED FRUITS



FRUITS IN SUMMER  
No. 1801 — Size, 16 x 20 ins.



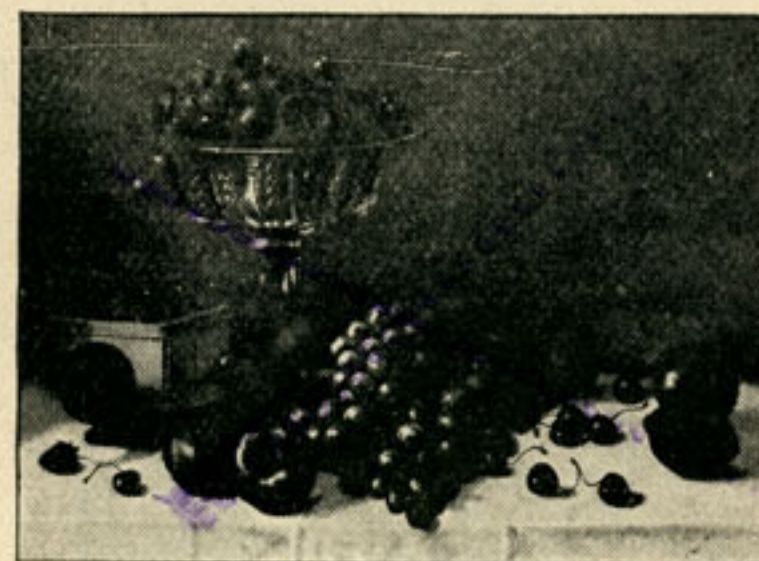
FRUITS IN WINTER  
No. 1802 — Size, 16 x 20 ins.



THE PICK OF THE MARKET  
No. 1804 — Size, 16 x 20 ins.



THE FRUITGROWERS' PRIDE  
No. 1805 — Size, 16 x 20 ins.

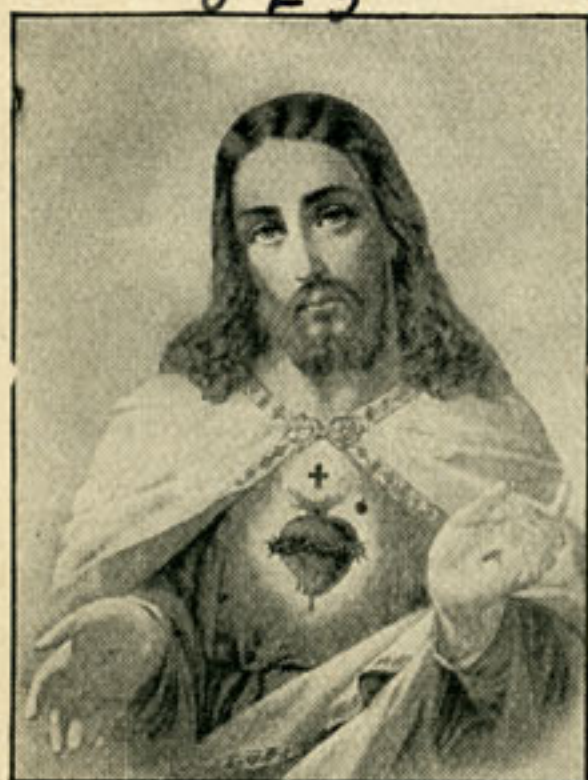


FAIR TO SEE AND SWEET TO EAT  
No. 1814 — Size, 16 x 20 ins.



FRUITS FOR THE FEAST  
No. 1815 — Size, 16 x 20 ins.

CARBON PRINTS



SACRED HEART OF JESUS  
No. 3600 — Size, 16 x 20 ins.



SACRED HEART OF MARY  
No. 3601 — Size, 16 x 20 ins.

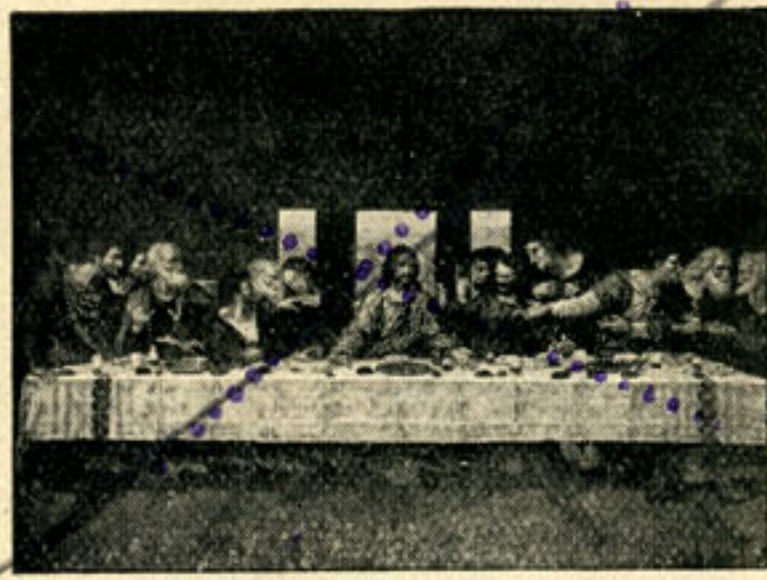


ECCE HOMO  
No. 3602 — Size, 16 x 20 ins.

CARBON PRINTS



MATER DOLOROSA  
No. 3603 — Size, 16 x 20 ins.  
1895



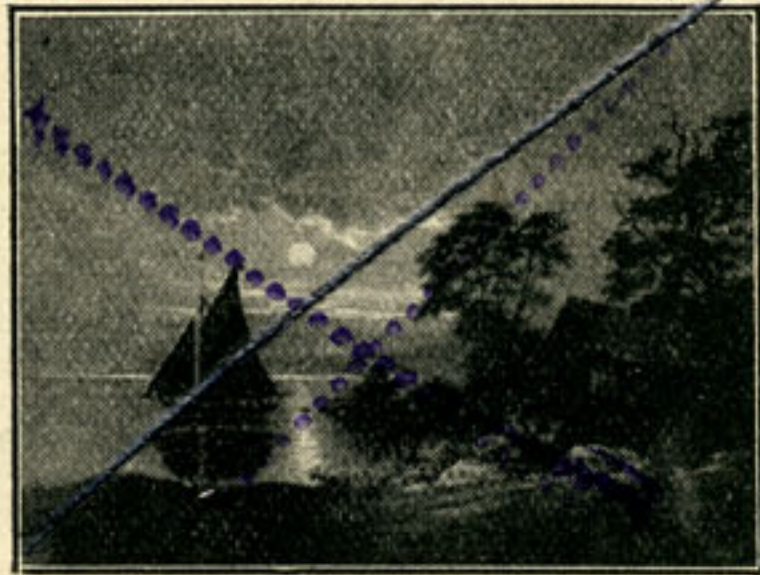
THE LAST SUPPER  
No. 3604 — Size, 16 x 20 ins.



THE HOLY FAMILY  
No. 3605 — Size, 16 x 20 ins.  
4475



ST. ANTHONY OF PADUA  
No. 3606 — Size, 16 x 20 ins.  
400



A SAIL BY MOONLIGHT  
No. 3700 — Size, 16 x 20 ins.  
2400



GUARDIAN ANGEL  
No. 3607 — Size, 16 x 20 ins.  
2750



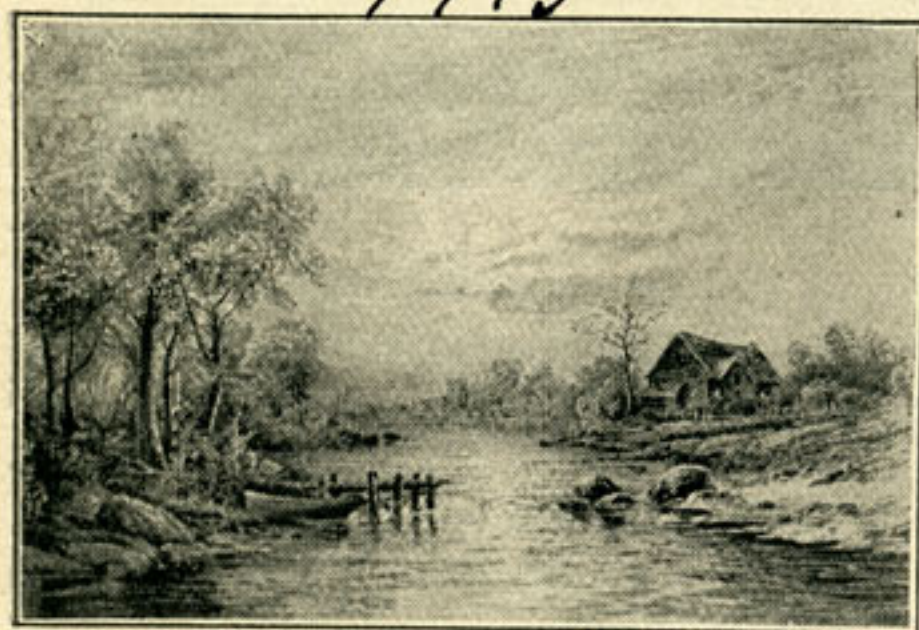
THE HUNTER'S CAMP FIRE  
No. 3701 — Size, 16 x 20 ins.  
1775



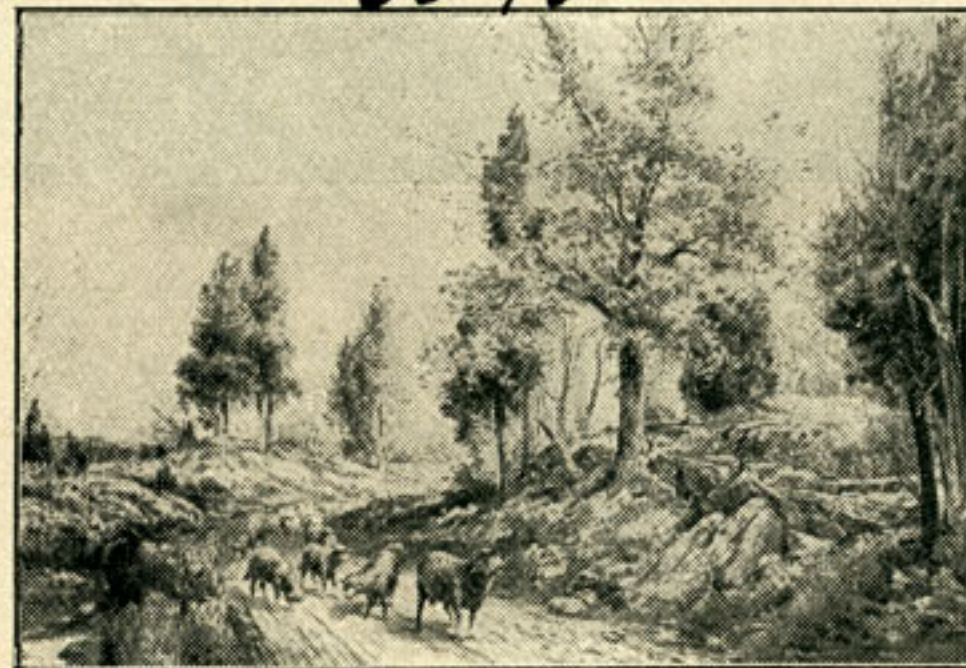
AT BREAK OF DAY  
No. 3702 — Size, 16 x 20 ins.  
5575



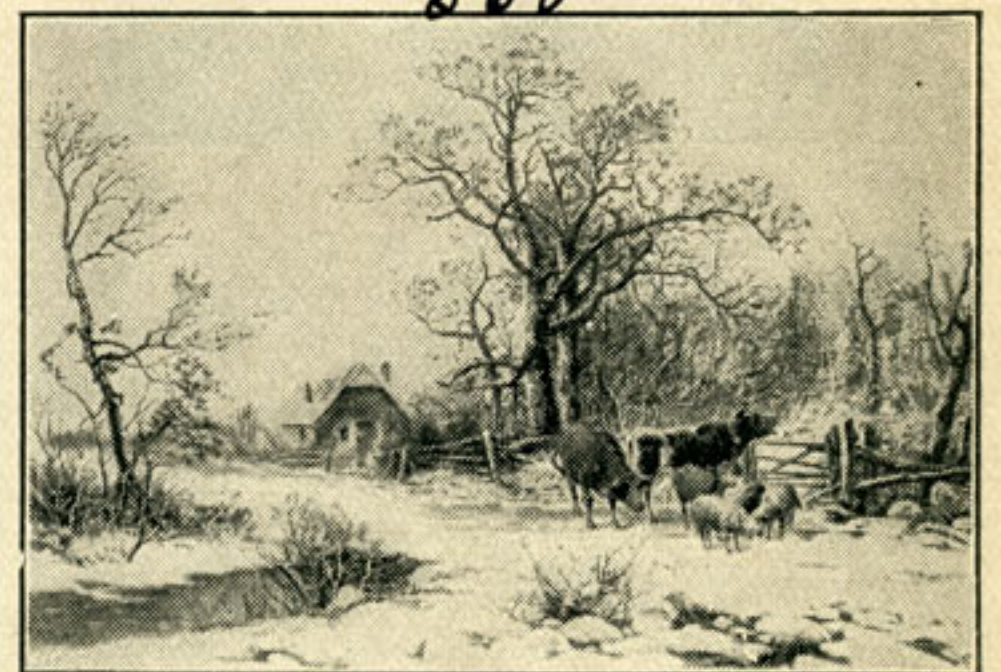
BEFORE SUNDOWN  
No. 3704 — Size, 16 x 20 ins.  
660



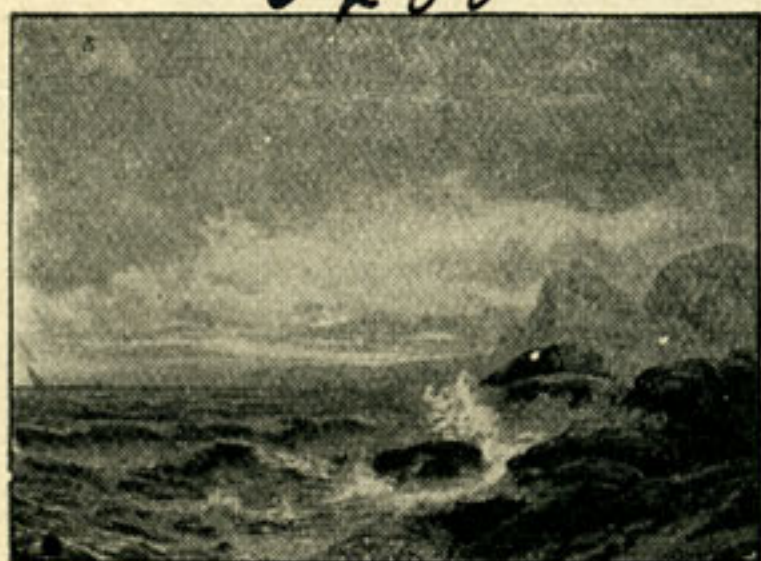
A BRIGHT MIDNIGHT  
No. 3705 — Size, 16 x 20 ins.  
5200



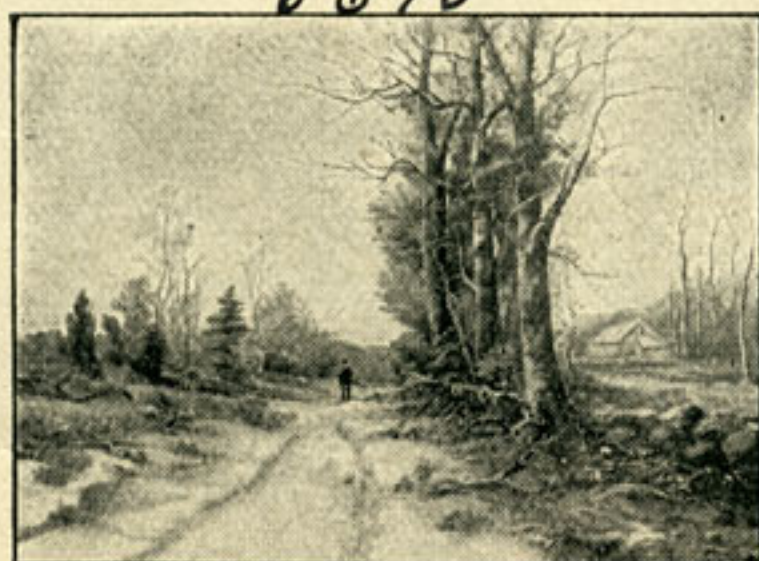
COME ON HOME  
No. 3706 — Size, 16 x 20 ins.  
6075



LET US IN  
No. 3707 — Size, 16 x 20 ins.  
5675



SUNSET ON THE COAST OF MAINE  
No. 3708 — Size, 16 x 20 ins.



WINTER IN NEW HAMPSHIRE  
No. 3709 — Size, 16 x 20 ins.



THE FIRST SETTLER'S HOME  
No. 3710 — Size, 16 x 20 ins.



CARBON PRINTS

675



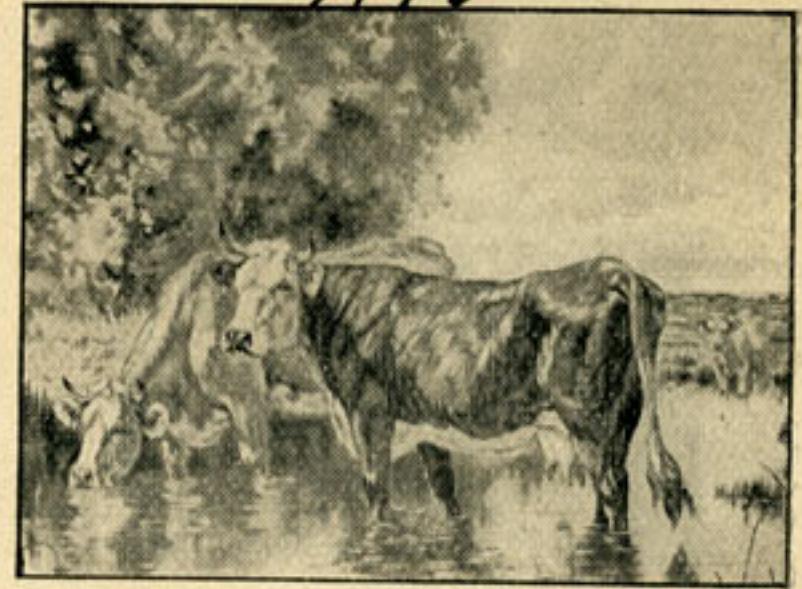
GUARDING THE FLOCK  
No. 3711 — Size, 16 x 20 ins.

300



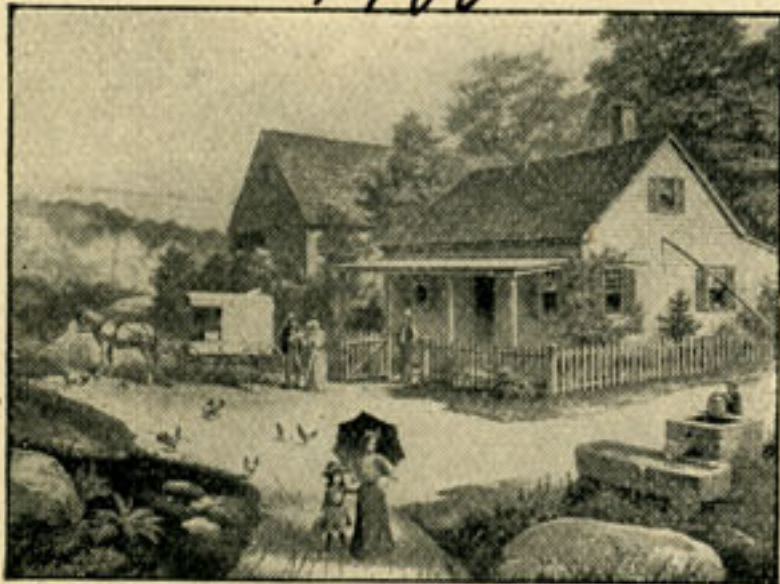
THE SWEETEST STORY EVER TOLD  
No. 3713 — Size, 16 x 20 ins.

4175



A COOL RETREAT  
No. 3712 — Size, 16 x 20 ins.

1700



THE OLD HOMESTEAD  
No. 3715 — Size, 16 x 20 ins.

1900



ROSES HAVE THORNS  
No. 3714 — Size, 16 x 20 ins.

900



THE BACKWOODSMAN'S CHRISTMAS  
No. 3716 — Size, 16 x 20 ins.

5600



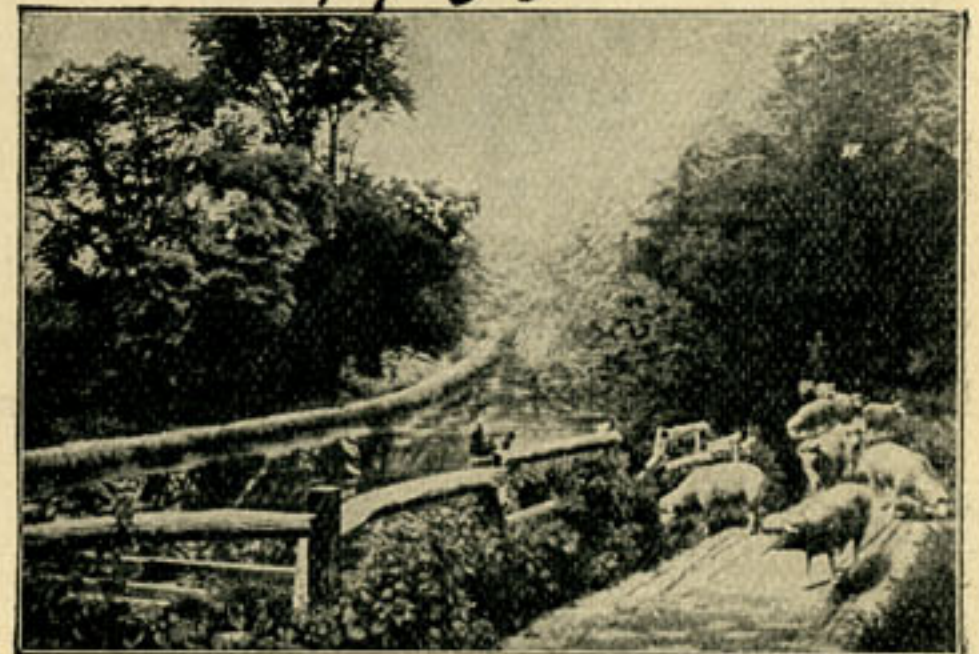
SUNRISE  
No. 3717 — Size, 16 x 20 ins.

4400



SUNSET  
No. 3718 — Size, 16 x 20 ins.

7750



COMING FROM PASTURE  
No. 3719 — Size, 16 x 20 ins.

6650



A TRUSTY GUARDIAN  
No. 3721 — Size, 16 x 20 ins.

3325



GOING TO PASTURE  
No. 3720 — Size, 16 x 20 ins.

3950



NERO'S MORNING TOILET  
No. 3722 — Size, 16 x 20 ins.

CARBON PRINTS

3645



PARTRIDGE SHOOTING  
No. 3723 — Size, 16 x 20 ins.

350



TROUT FISHING  
No. 3724 — Size, 16 x 20 ins.

DUPLEX PHOTOS



SUNRISE

- 1307 - No. 201 — Size, 12 x 30 ins.  
 No. 701 — Size, 14 x 30 ins.  
 740 - No. 301 — Size, 16 x 24 ins.

- SUNSET  
 1662 - No. 202 — Size, 12 x 30 ins.  
 No. 702 — Size, 14 x 30 ins.  
 840 - No. 302 — Size, 16 x 24 ins.



MORNING

- 1330 - No. 203 — Size, 12 x 30 ins.  
 No. 703 — Size, 14 x 30 ins.  
 540 - No. 303 — Size, 16 x 24 ins.

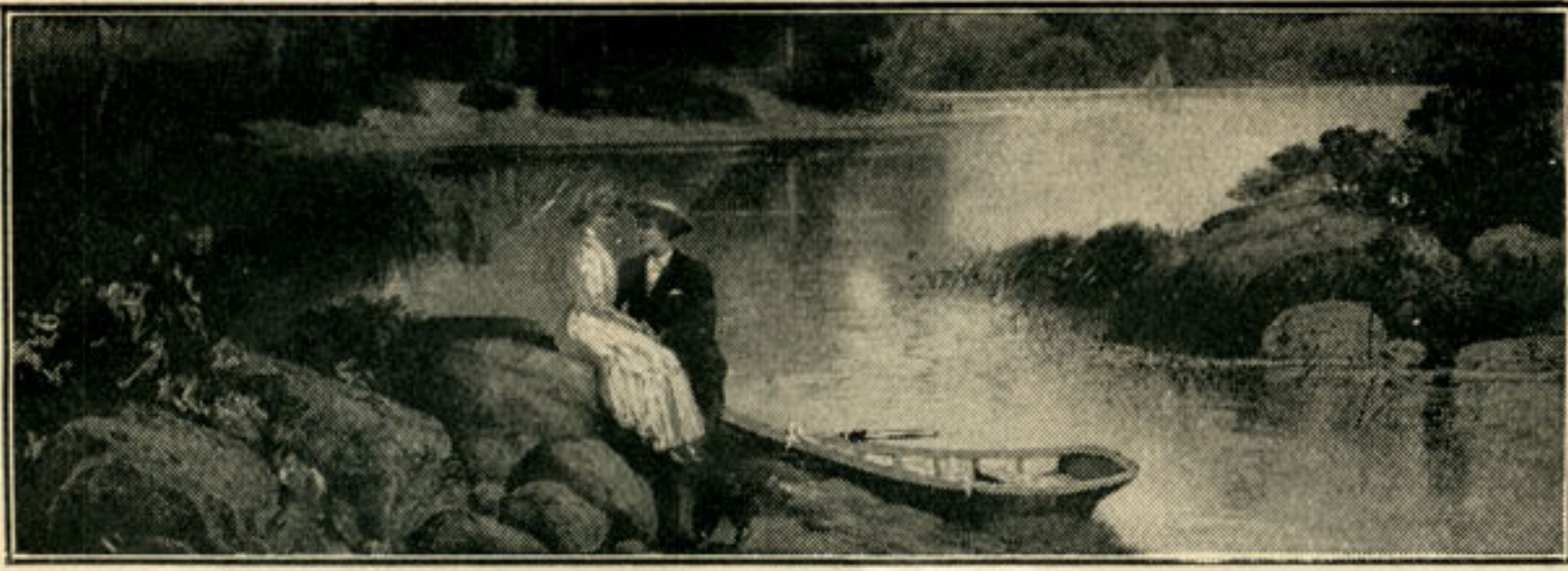


- AFTERNOON  
 2035 - No. 204 — Size, 12 x 30 ins.  
 No. 704 — Size, 14 x 30 ins.  
 640 - No. 304 — Size, 16 x 24 ins.



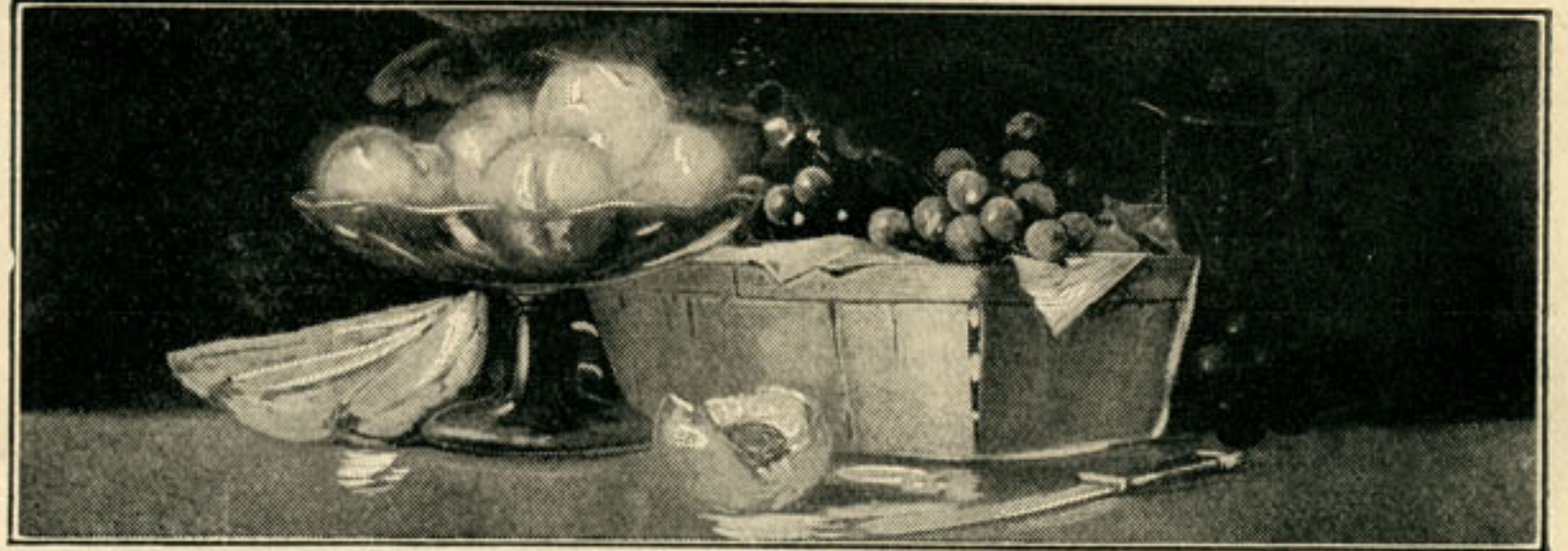
THE SUNSHINE OF LIFE  
 694 - No. 205 — Size, 12 x 30 ins.

DUPLEX PHOTOS

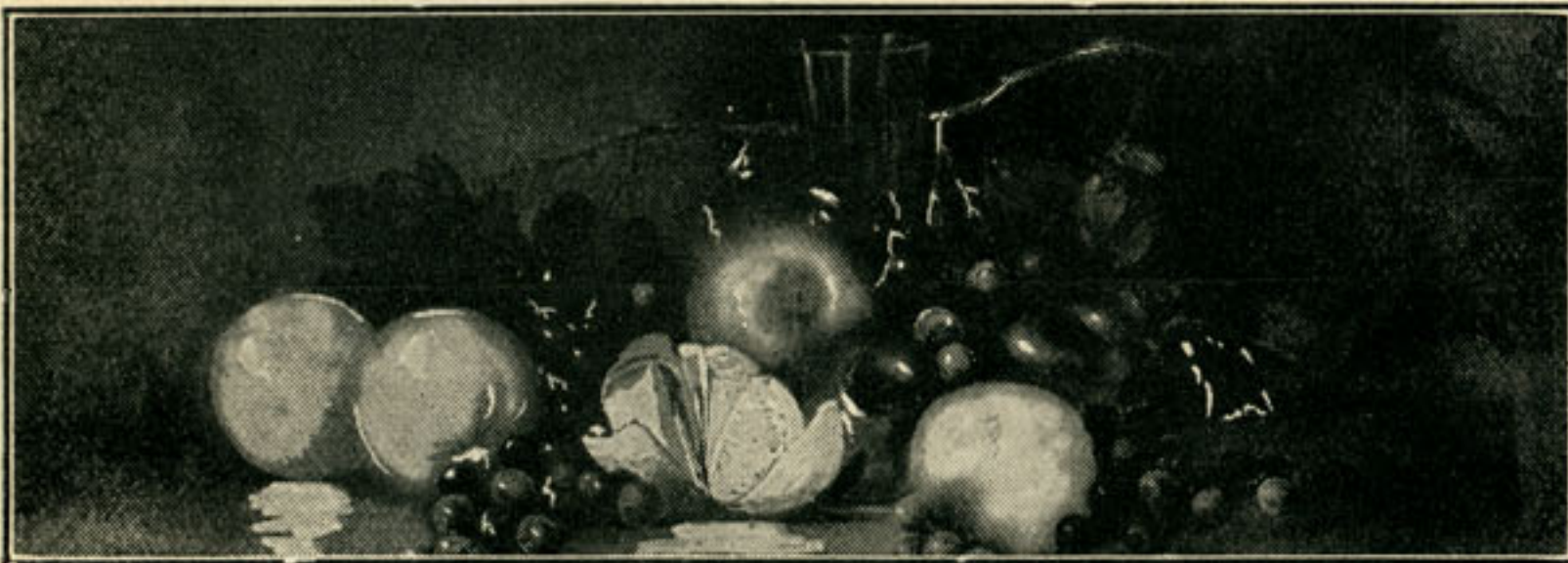


A HAPPY MOMENT  
594 - No. 206 - Size, 12 x 30 ins.

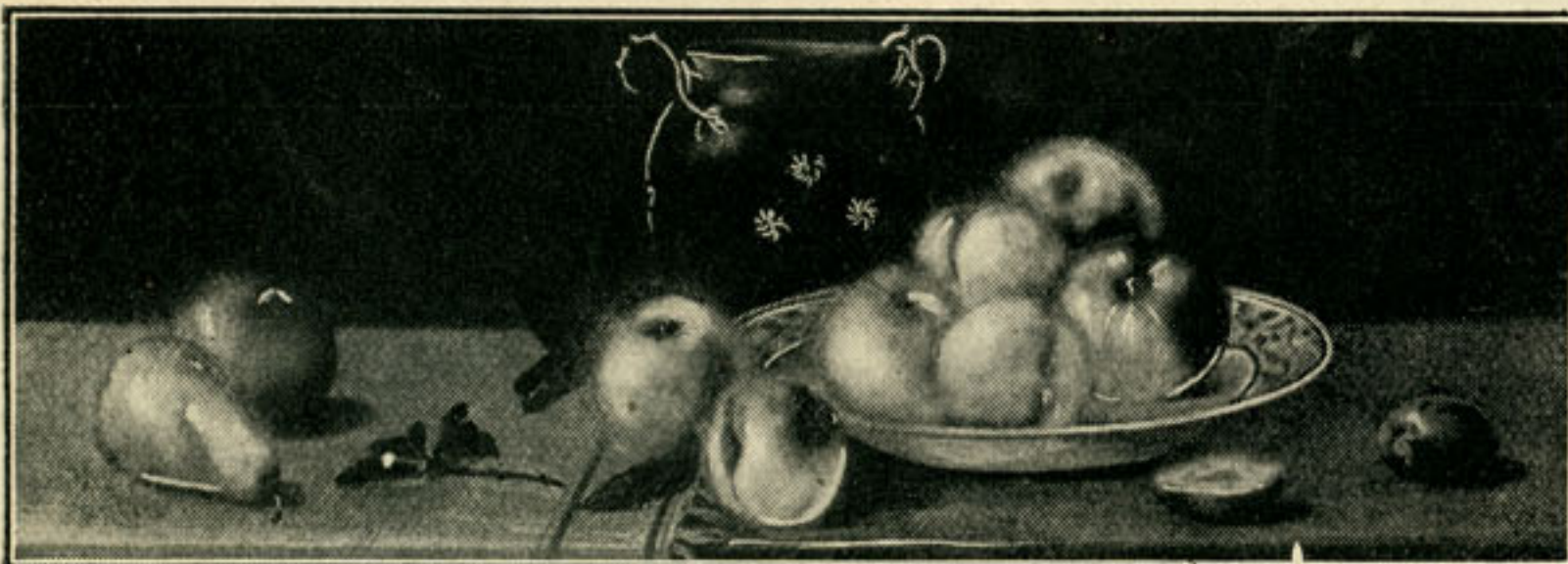
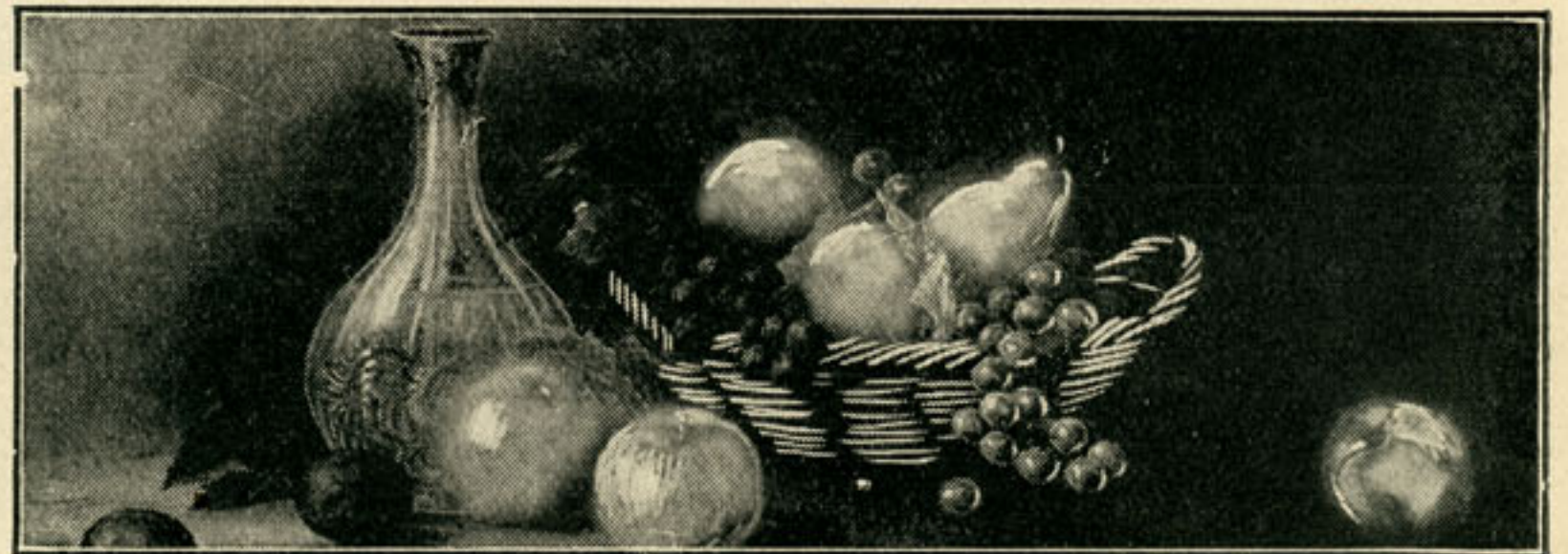
~~BREAKFAST DELIGHTS~~  
~~No. 207 - Size, 12 x 30 ins.~~  
~~No. 707 - Size, 14 x 30 ins.~~  
~~No. 309 - Size, 16 x 24 ins.~~



~~GEMS FROM FLORIDA~~  
~~No. 208 - Size, 12 x 30 ins.~~  
~~No. 708 - Size, 14 x 30 ins.~~  
~~No. 310 - Size, 16 x 24 ins.~~



LUSCIOUS FRUITS  
 603 - No. 211 - Size, 12 x 30 ins.  
 375 - No. 711 - Size, 14 x 30 ins.  
 311 - No. 311 - Size, 16 x 24 ins.



FRESH FROM THE GARDEN  
 688 - No. 212 - Size, 12 x 30 ins.  
 1075 - No. 712 - Size, 14 x 30 ins.  
 312 - No. 312 - Size, 16 x 24 ins.

AT BREAK OF DAY  
 229 - No. 213 - Size, 12 x 30 ins.  
 713 - No. 713 - Size, 14 x 30 ins.  
 540 - No. 313 - Size, 16 x 24 ins.



## DUPLEX PHOTOS

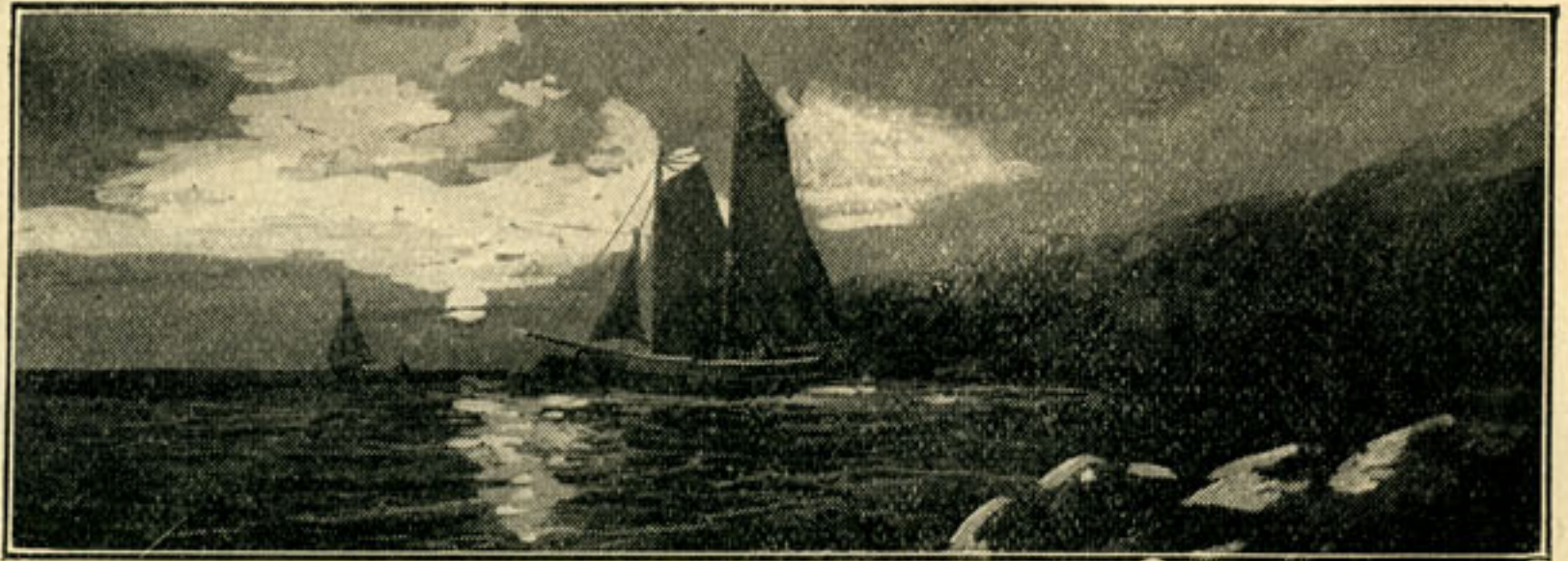


### TWILIGHT

1659 - No. 214 — Size, 12 x 30 ins.  
634 - No. 714 — Size, 14 x 30 ins.  
No. 314 — Size, 16 x 24 ins.

### BEFORE SUNDOWN

471 - No. 215 — Size, 12 x 30 ins.  
565 - No. 715 — Size, 14 x 30 ins.  
No. 315 — Size, 16 x 24 ins.



### A BRIGHT MIDNIGHT

No. 216 — Size, 12 x 30 ins.  
..... No. 716 — Size, 14 x 30 ins.  
940 - No. 316 — Size, 16 x 24 ins.



### WINTER IN NEW HAMPSHIRE

2095 - No. 217 — Size, 12 x 30 ins.  
830 - No. 717 — Size, 14 x 30 ins.  
No. 317 — Size, 16 x 24 ins.



### THE FIRST SETTLER'S HOME

764 - No. 218 — Size, 12 x 30 ins.  
665 - No. 718 — Size, 14 x 30 ins.  
No. 318 — Size, 16 x 24 ins.



### A SAIL BY MOONLIGHT

1188 - No. 219 — Size, 12 x 30 ins.  
No. 719 — Size, 14 x 30 ins.  
No. 319 — Size, 16 x 24 ins.



DUPLEX PHOTOS



THE HUNTER'S CAMP FIRE  
 No. 220 — Size, 12 x 30 ins.  
 1076 - No. 720 — Size, 14 x 30 ins.  
 No. 320 — Size, 16 x 24 ins.

MOONLIGHT AT MONTAUK POINT

No. 221 — Size, 12 x 30 ins.  
 No. 721 — Size, 14 x 30 ins.



SUNSET ON THE COAST OF MAINE

No. 222 — Size, 12 x 30 ins.  
 355 - No. 722 — Size, 14 x 30 ins.

A DANDY FEAST

3478 - No. 223 — Size, 12 x 30 ins.  
 No. 723 — Size, 14 x 30 ins.  
 No. 323 — Size, 16 x 24 ins.



SWEET AS THEY LOOK

3743 - No. 224 — Size, 12 x 30 ins.  
 No. 724 — Size, 14 x 30 ins.  
 No. 324 — Size, 16 x 24 ins.



A THANKSGIVING FEAST

1043 - No. 225 — Size, 12 x 30 ins.  
 No. 725 — Size, 14 x 30 ins.



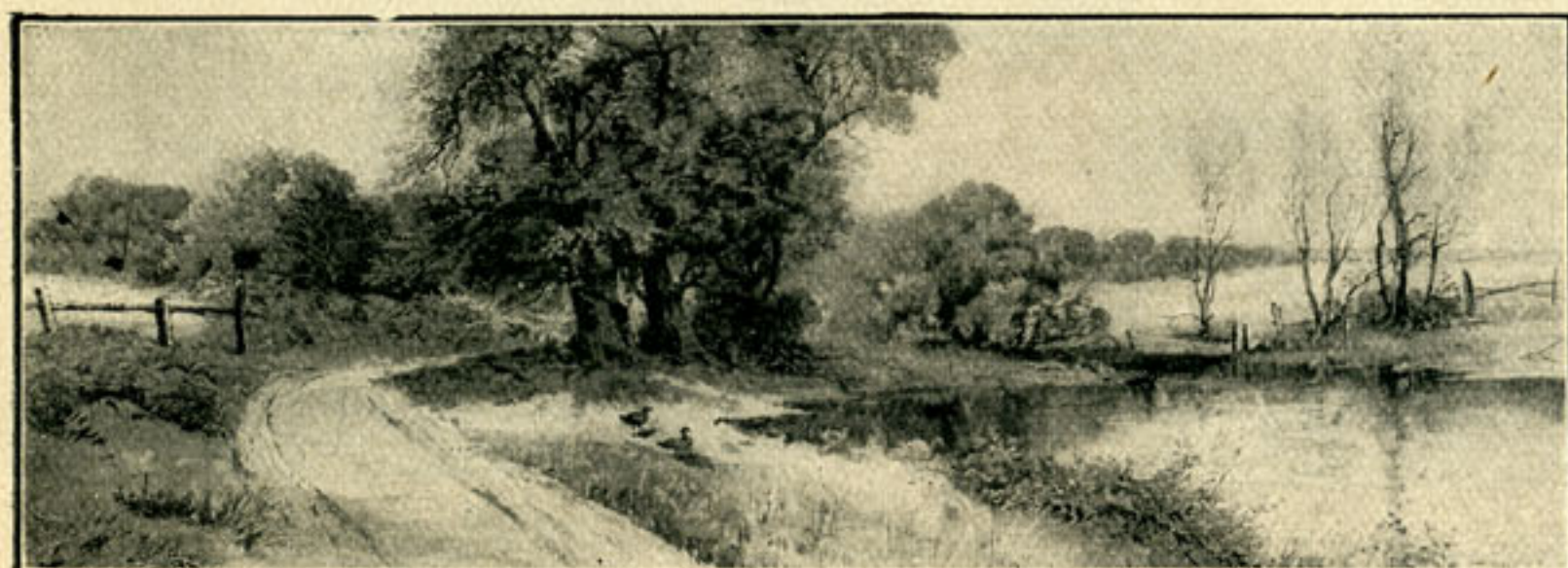
DUPLEX PHOTOS



CALIFORNIA FRUITS  
 No. 226 — Size, 12 x 30 ins.  
 1043 - No. 726 — Size, 14 x 30 ins.

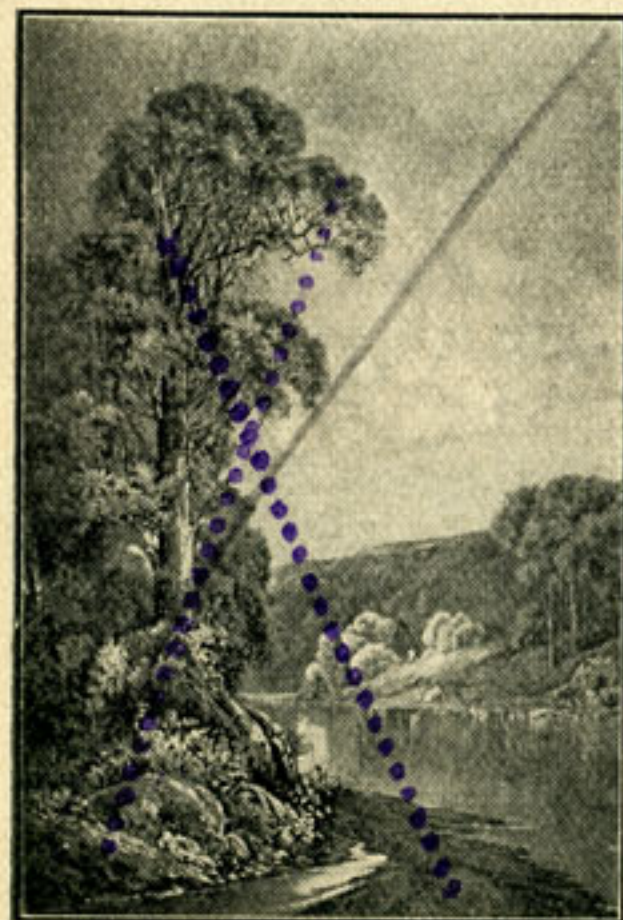


VALLEY STREAM  
 2949 - No. 227 — Size, 12 x 30 ins.  
 No. 727 — Size, 14 x 30 ins.  
 No. 327 — Size, 16 x 24 ins.

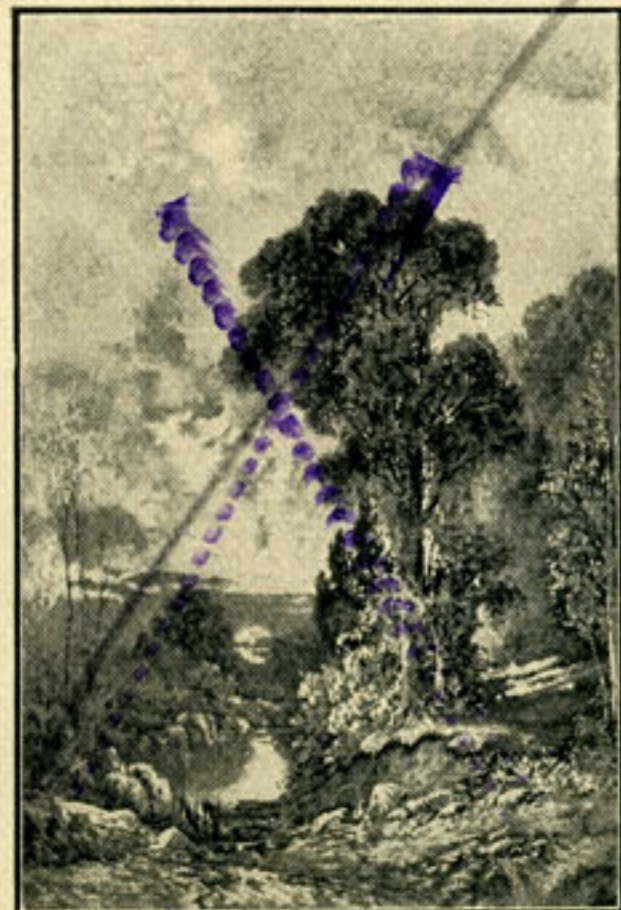


THE HEAD OF THE BAY  
 4354 - No. 228 — Size, 12 x 30 ins.  
 No. 728 — Size, 14 x 30 ins.  
 No. 328 — Size, 16 x 24 ins.

DUPLEX PHOTOS



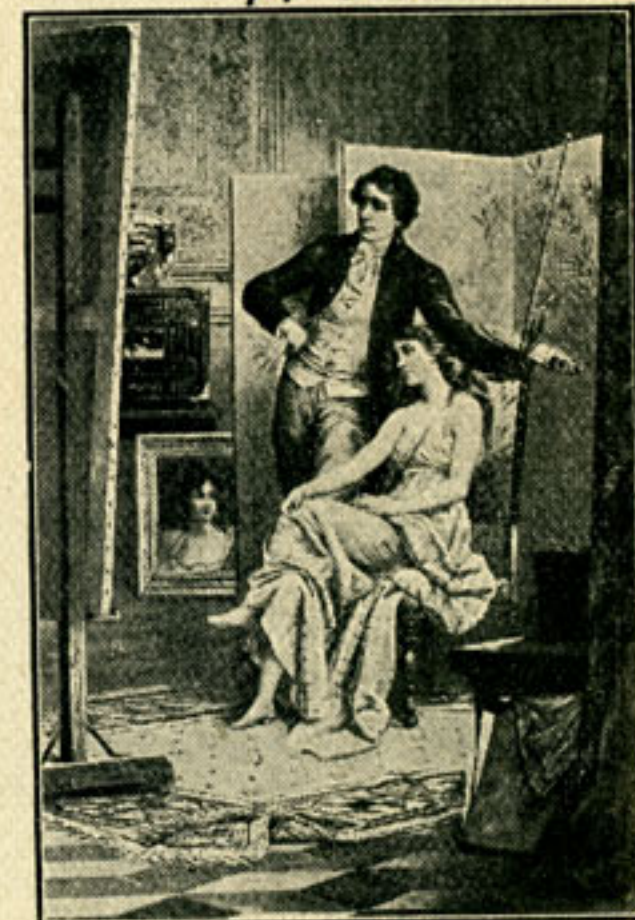
MOONLIGHT IN THE  
 MOHAWK VALLEY  
 No. 305 — Size, 16 x 24 ins.



SUNSET ON PECONIC BAY  
 No. 306 — Size 16 x 24 ins.



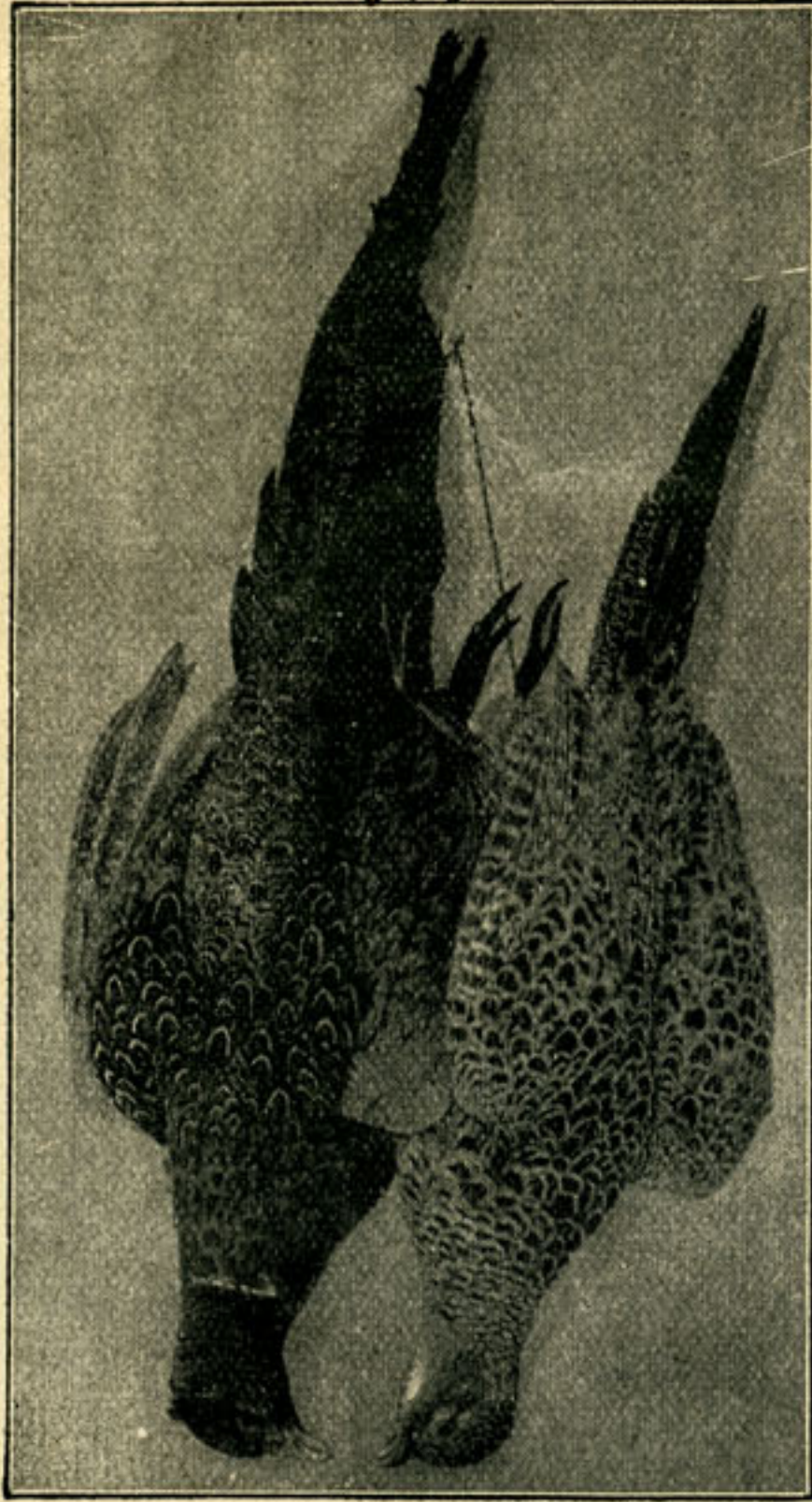
MUSIC  
 No. 307 — Size, 16 x 24 ins.



ART  
 No. 308 — Size, 16 x 24 ins.

GAMES

8.00



ENGLISH PHEASANTS  
No. 2575 — Size, 16 x 28 ins.

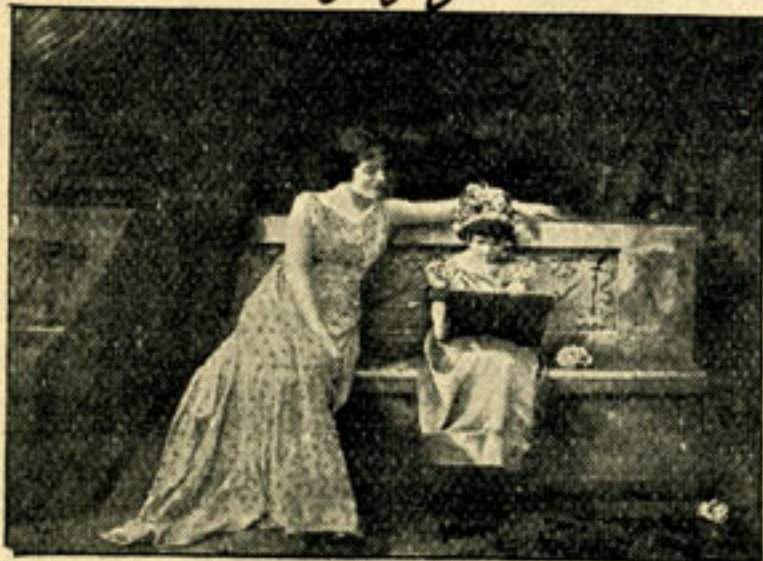
6.00



AMERICAN DUCKS  
No. 2576 — Size, 16 x 28 ins.

DUPLEX PHOTOS

8.00

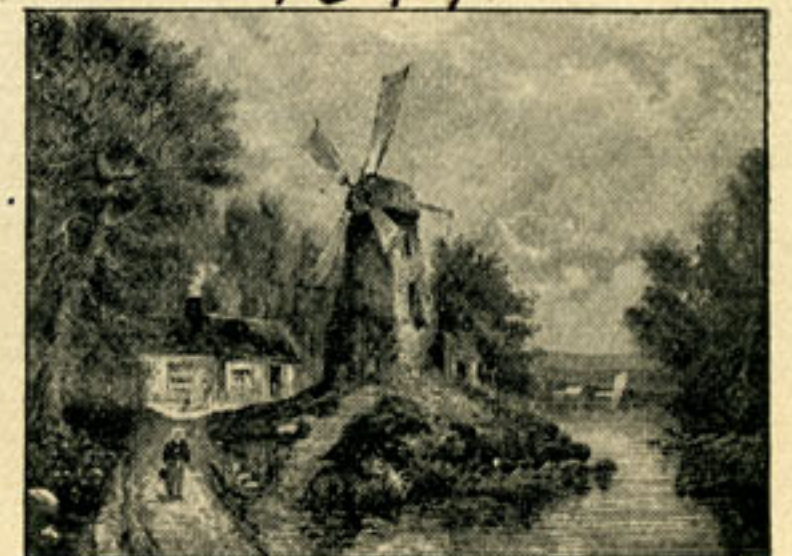


AN INTERESTING STORY  
No. 3551 — Size, 20 x 30 ins.



HER FIRST RECITAL  
No. 3552 — Size, 20 x 30 ins.

15.14



THE OLD WINDMILL  
No. 3553 — Size, 20 x 30 ins.

14.22



CHRISTMAS IN THE COUNTRY  
No. 3554 — Size, 20 x 30 ins.

11.00



THE INTERRUPTED PROPOSAL  
No. 3563 — Size, 20 x 30 ins.



PLEASE DANCE WITH ME  
No. 3564 — Size, 20x 30 ins.

DUPLEX PHOTOS

650

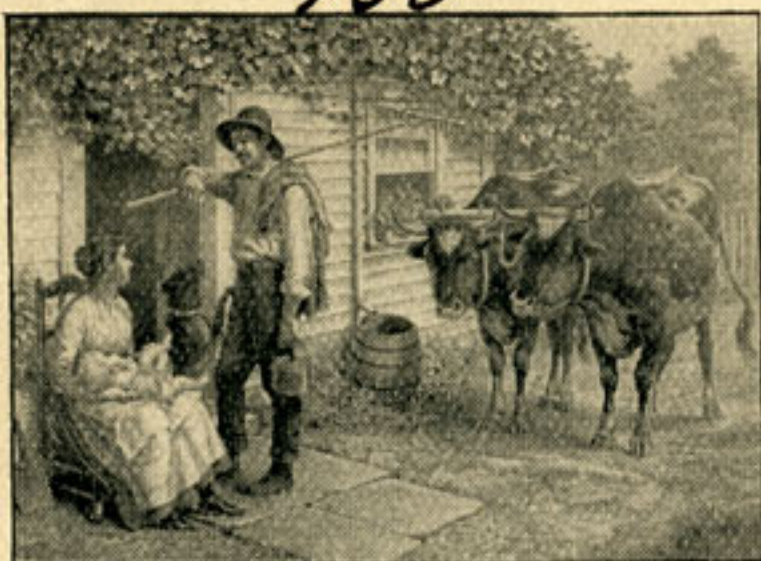


COURTSHIP

No. 3567 — Size, 20 x 30 ins.

900

750

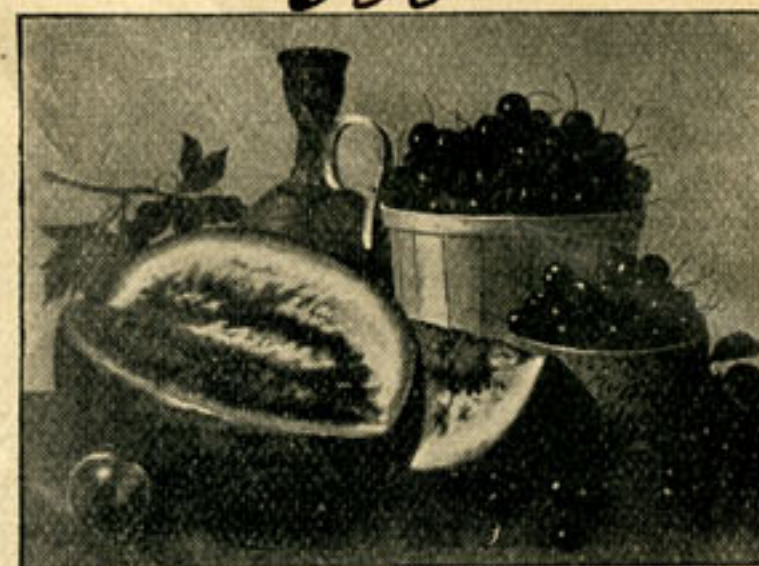


MARRIAGE

No. 3568 — Size, 20 x 30 ins.

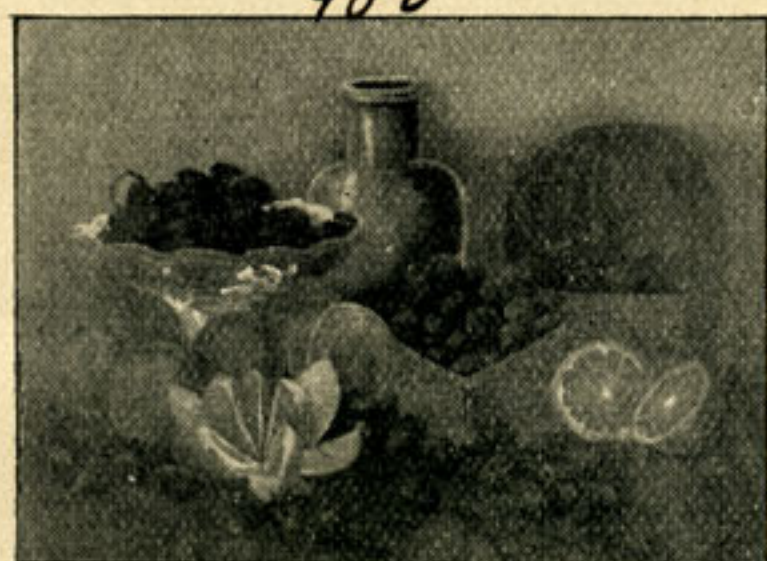
548

500



DELICIOUS FRUIT

No. 3569 — Size, 20 x 30 ins.



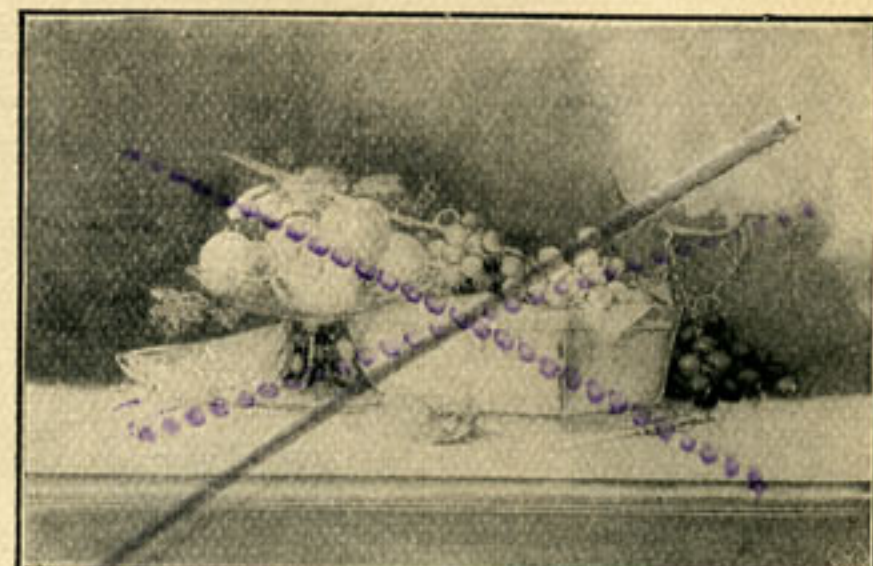
A TEMPTING DISPLAY

No. 3570 — Size, 20 x 30 ins.



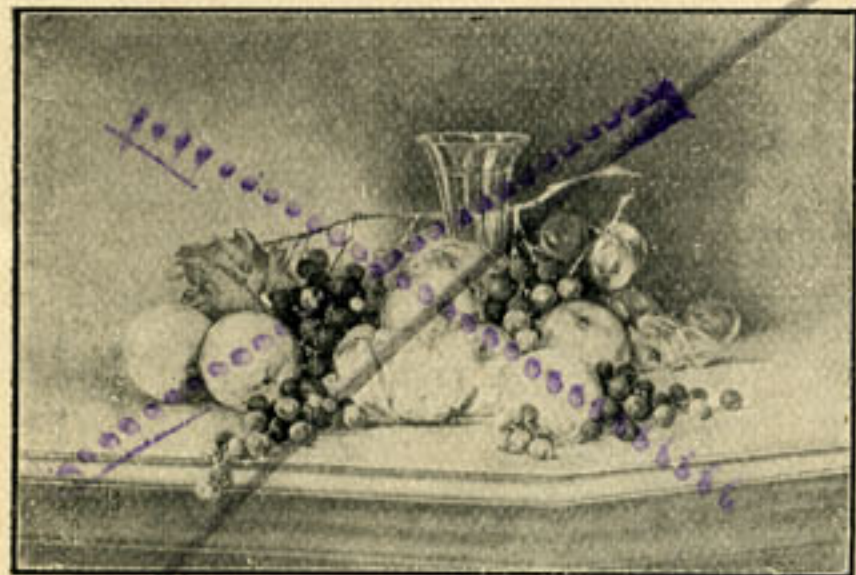
HIS THREE FAITHFUL FRIENDS

No. 3571 — Size, 20 x 30 ins.



BREAKFAST DELIGHTS

No. 3572 — Size, 20 x 30 ins.



GEMS FROM FLORIDA

No. 3573 — Size, 20 x 30 ins.



A DANDY FEAST

No. 3575 — Size, 20 x 30 ins.

2551



SWEET AS THEY LOOK

No. 3574 — Size, 20 x 30 ins.

221



SACRED HEART OF JESUS

No. 4101 — Size, 20 x 30 ins.

3673



SACRED HEART OF MARY

No. 4102 — Size 20 x 30 ins.

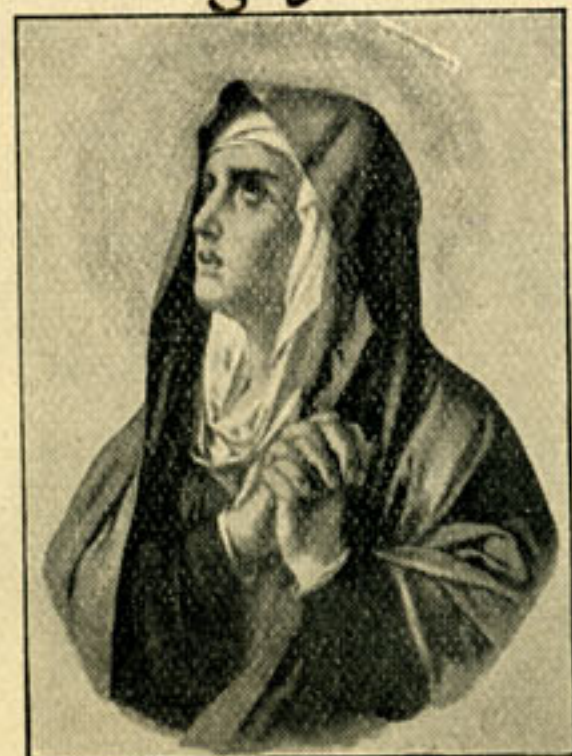
1276



ECCE HOMO

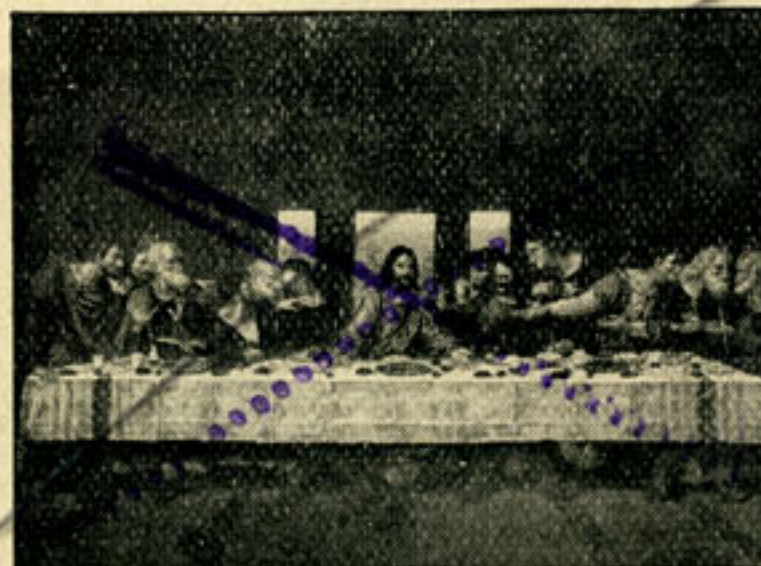
No. 4103 — Size, 20 x 28 ins.

3776



MATER DOLOROSA

No. 4104 — Size, 20 x 28 ins.



THE LAST SUPPER

No. 4105 — Size, 20 x 28 ins.



THE HOLY FAMILY

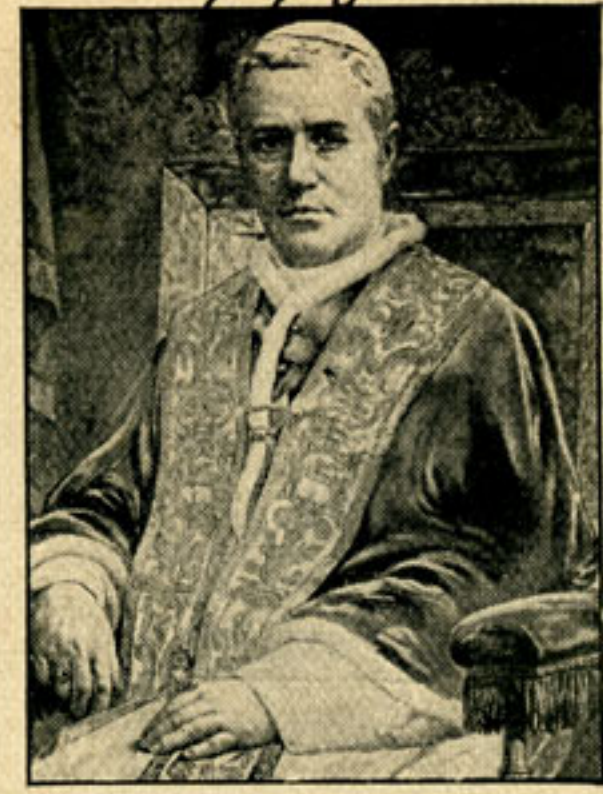
No. 4106 — Size, 20 x 30 ins.



DUPLEX PHOTOS



ST. ANTHONY OF PADUA  
No. 4107 — Size, 20 x 30 ins.



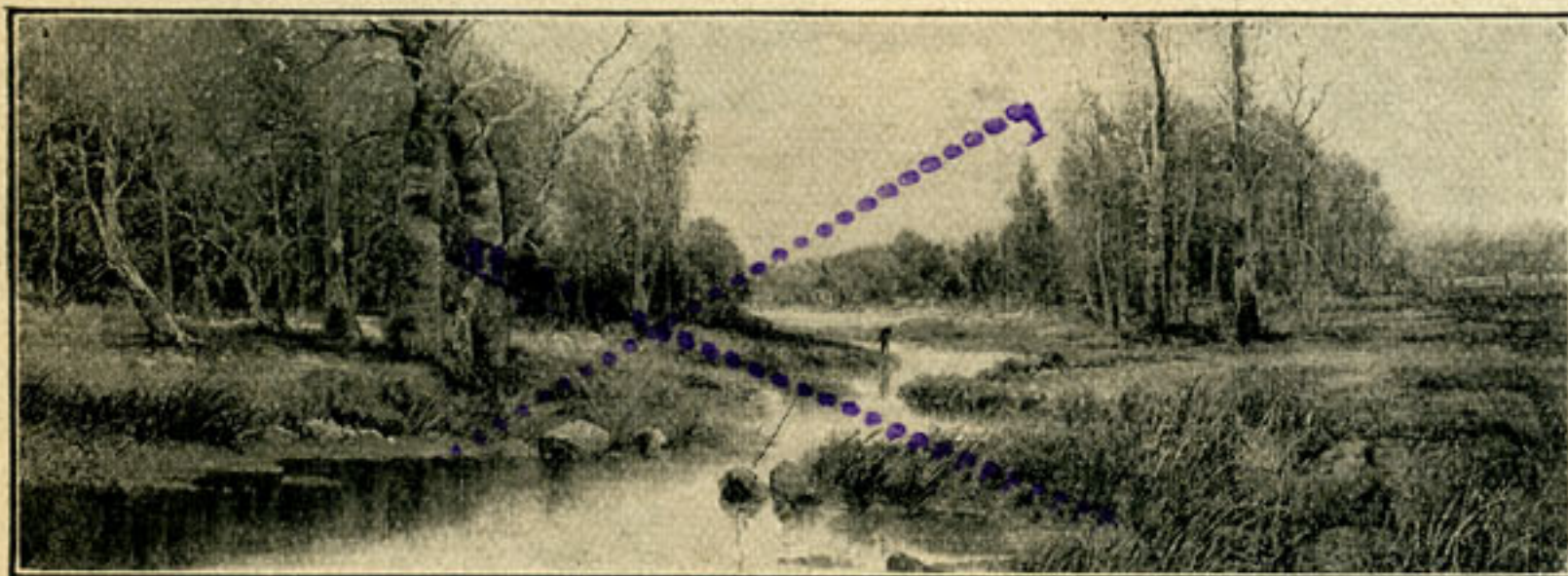
POPE PIUS X.  
No. 4108 — Size, 20 x 28 ins.



CARING FOR THE MOTHERLESS  
No. 2073 — Size, 20 x 40 ins.



COOLING OFF AT THE BROOK  
No. 2074 — Size, 20 x 40 ins.



VALLEY STREAM  
No. 2075 — Size, 20 x 40 ins.



THE HEAD OF THE BAY  
No. 2076 — Size, 20 x 40 ins.